

5th European Conference
on Integrated Care and Assertive Outreach

SHAPING THE FUTURE OF COMMUNITY MENTAL HEALTH CARE

September 5-7, 2019 | Verona, Italy | Santa Marta Building

European Assertive
Outreach Foundation

EAOF BUILDING BLOCK
WITH UNITED
SENSES



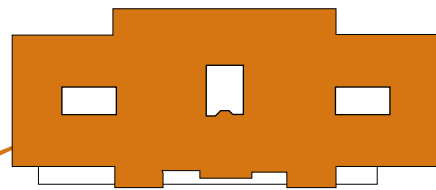
AZIENDA OSPEDALIERA
UNIVERSITARIA INTEGRATA
VERONA



UNIVERSITÀ
di **VERONA**

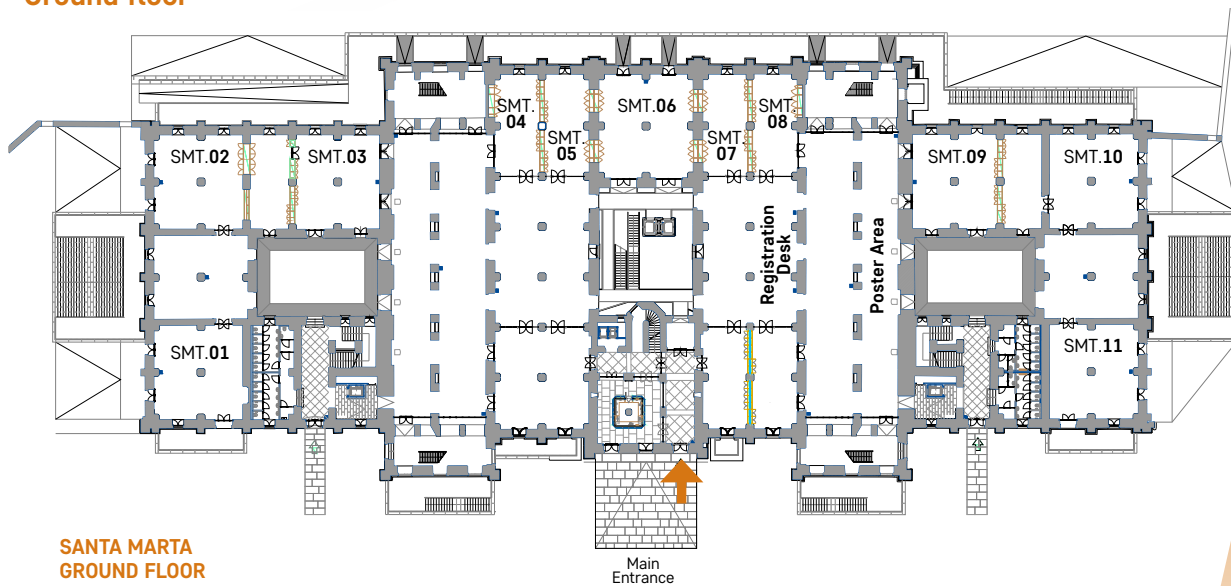


Conference Map



Santa Marta Building

Santa Marta Ground floor



Silos di Ponente

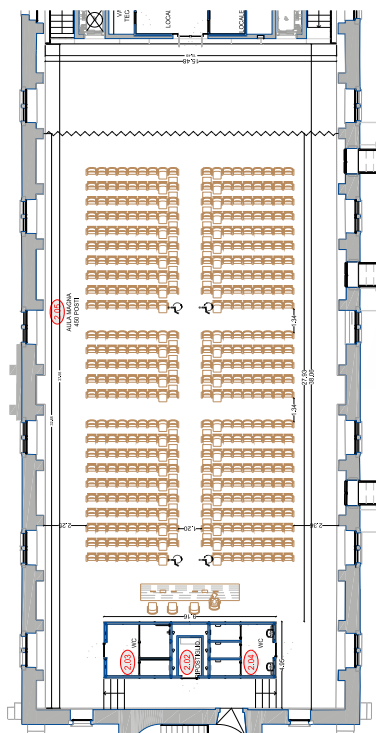
SANTA MARTA GROUND FLOOR

- Room SMT.01 MICHELANGELO
- Room SMT.02 GOYA
- Room SMT.03 MUNCH
- Room SMT.04 LIGABUE
- Room SMT.05 VAN GOGH
- Room SMT.06 DE CHIRICO
- Room SMT.07 MODIGLIANI
- Room SMT.08 GAUGUIN
- Room SMT.09 DALÍ
- Room SMT.10 MONET
- Room SMT.11 FRIDA KHALO

SANTA MARTA UNDERGROUND FLOOR

Catering Area

Silos di Ponente



SILOS DI PONENTE SECOND FLOOR
Auditorium
Lecture Hall

Endorsements



REGIONE DEL VENETO

Regione del Veneto



Società Italiana di Psichiatria (SIP)



Società Italiana di Epidemiologia Psichiatrica (SIEP)



PSIVE
Società Italiana di Psichiatria
Sezione Veneta

Società Italiana di Psichiatria - Sezione Veneta (PSIVE)

Acknowledgements

We are glad to let you know that the **EAOF Verona 2019 Conference** has been officially acknowledged as a **proESOF event** (www.proesof2020.eu).

The EuroScience Open Forum (ESOF) is an interdisciplinary biennial pan-European event created by the EuroScience Association. The EuroScience Open Forum is the most important European event dedicated to science, technology, society and policy promoting research and innovation. The event is preceded by a series of authorised proESOF initiatives that will set the floor for the ESOF 2020 to be held in Trieste on July 5-9, 2020 (www.esof.eu/en/home.html) and will be focussed on the theme: 'Freedom for Science, Science for Freedom'.





Welcome

to The Fifth International Conference on Community Mental Health Care entitled

Shaping the Future of Community Mental Health Care

organized by the University of Verona and the Verona Hospital Trust, in collaboration with the European Assertive Outreach Foundation.

We want to prevent mental illness and provide integrated (medical and social) care for people with severe mental illness, facilitating the recovery process. This can be done by providing mental health care in the community.

Deinstitutionalization led to a decrease in psychiatric hospital beds during the last decades, and better outpatient care in many countries. New treatments became available, such as modern psychological treatments, digital psychiatry, new recovery oriented approaches and the introduction of peer-experts. Prevention of mental illness in the community, especially for younger people, is done in some areas but by so far not everywhere.

In the meantime, research shows that the prognosis of severe mental illness has not improved over the last decades. We need better implementation of effective practices, better collaboration with consumers and significant others, more use of digital psychiatry and better integration of various services. But how can we achieve this?

During this three-day international event in the beautiful city of Verona, we will address the issues mentioned

above. We will discuss how we can prevent (severe) mental illness and improve its outcome in the future by using modern community oriented and digital approaches. You are cordially invited to come to Italy, the birthplace of deinstitutionalization since the Basaglia Mental Health Act in 1978, to contribute to this inspiring conference in Verona, and be part of the process of shaping the future of community mental health care.

We look forward to your active participation in the Conference.

Welcome to the beautiful city of Verona!

Prof. Mirella Ruggeri
Chair Local Organizing Committee
Professor of Psychiatry
Director, Institute of Psychiatry, AOUI
Director, Specialization School in Psychiatry
University of Verona, Italy

Prof. Niels Mulder
President EAOF
Professor of Public Mental Health
Erasmus University
Rotterdam, The Netherlands



Committees

Local Organizing Committee

University of Verona and Verona Hospital Trust (AOUI)

Coordinator: Prof. Mirella Ruggeri

Dr. Chiara Bonetto

Dr. Doriana Cristofalo

Prof. Antonio Lasalvia

Dr. Cristina Lovato

Dr. Alessandra Martinelli

Dr. Vanda Orlandi

Organizing Committee of the European Assertive Outreach Foundation (EAOF)

Prof. Niels Mulder

Dr. Marijke C. van Putten

Ms. Margret Overdijk

Mr. Jan Berndsen

Index

Conference Map	2
Endorsements	3
Welcome Address	4
Committees	5
Conference Program Overview	7
Thursday, September 5, 2019	7
Friday, September 6, 2019	8
Saturday, September 7, 2019	9
Symposia - Overall View	10
Workshop - Overall View	12
Oral Presentations - Overall View	13
Detailed Scientific Program	14
Thursday, September 5, 2019	15
Friday, September 6, 2019	23
Saturday, September 7, 2019	32
Poster Session	35
Plenary Lectures	38
Participant Information	42
Social events	44



CARE

by Franco Battiato, an Italian singer-songwriter and composer, a poet

*I'll protect you from your fears of illness
from upheaval which from this moment
you'll encounter along your path.*

*From injustice and deception of your time,
From failure you will usually attract by instinct.
I'll relieve you of pain and mood swings,
of obsessions with your manias.*

*I'll overcome gravitational currents,
Space and light, and keep you from growing old.
And you will recover from all maladies
because you're special,
and I'll take care of you.*

*Faster than eagles my dreams
are sailing across the ocean.
I'll take you beyond silence and patience.
Together we'll be walking the streets leading to the essence.*

*The scents of love will be stirring our bodies,
The calm of August wont cool our senses.
I'll weave your hair like plots of a 'canto'.*

*I know the laws of the world and I'll make a gift of them to you.
I'll overcome gravitational currents,
space and light, and keep you from growing old.*

*I'll save you from melancholy,
because you 're special,
and I'll take care of you.....
I will surely take care of you.*



Conference Program Overview

Thursday, September 5, 2019

8:45	Registration and open coffee during all day Conference works	
9:45	Opening Cerimony	Silos di Ponente Lecture Hall
9:45	<p>Eidos Danza, Verona <i>Ballet on the song CARE by Franco Battiato, 2000</i></p> <p>Welcome addresses Mirella Ruggeri, President of the Conference (Verona, Italy) Niels Mulder, President European Assertive Outreach Foundation (EAOF) (Rotterdam, The Netherlands)</p> <p>Authorities' greetings Nicola Sartor, Rector University of Verona Manuela Lanzarin, Regional Councillor for Health - Social Services - Social Health Planning, Veneto Region Domenico Mantoan, Director Health and Social Area, Veneto Region Francesco Cobello, General Director, Hospital Trust of Verona Domenico De Leo, President of the Verona Medical School Francesca Briani, Councillor for Culture, Tourism, Youth Politics and Equal Opportunities, Representative of the Major, City Council of Verona Enrico Zanalda, President Società Italiana di Psichiatria (SIP) Fabrizio Starace, President Società Italiana di Epidemiologia Psichiatrica (SIEP) Antonio Lasalvia, President Società Italiana di Psichiatria - Sezione Veneta (PSIVE)</p> <p>Mario Chiarini, Tenor <i>Nessun Dorma (from Turandot by G. Puccini, 1924)</i></p>	
10:45	<p>Opening Lecture Chairs: Mario Maj (Napoli, Italy), Niels Mulder (Rotterdam, The Netherlands) 10 good reasons to be optimistic about the future of community mental health care and 5 to stay alert Mirella Ruggeri (Verona, Italy)</p>	
11:30	<p>Lectio Magistralis Chairs: Mario Maj (Napoli, Italy), Bernardo Carpiello (Cagliari, Italy) Using Implementation Science and a Learning Health Care System Framework to Improve the Quality of Care Lisa Beth Dixon (New York, USA)</p>	
12:15	<p>Lectio Magistralis Chairs: Margret Overdijk (Amsterdam, The Netherlands), Antonio Lasalvia (Verona, Italy) Integrated Care in adolescents with mental disorders and the role of transition psychiatry Anne Karow (Hamburg, Germany)</p>	
13:00	Lunch	
14:00	Symposia and Workshops Sessions	Parallel Sessions
15:30	Symposia and Workshops Sessions	Parallel Sessions
17:00	Symposia and Workshops Sessions	Parallel Sessions
18:30	End of 5 Sept. Sessions	
19:00	Welcome Cocktail at Santa Marta University Building	



Conference Program Overview

Friday, September 6, 2019

8:30	Secretariat opening	
9:00 - 10:30	Oral Presentations Sessions	Parallel Sessions
10:30	Coffee break	
11:00 - 12:30		Silos di Ponente Lecture Hall
11:00	<p>Mario Chiarini, Tenor <i>Va' Pensiero (from Nabucco by G. Verdi, 1842)</i></p> <p>Lectio Magistralis Chairs: Marijke van Putten (Leiden, The Netherlands), Lorenzo Burti (Verona, Italy) Deinstitutionalization as transformation of psychiatry: processes and outcomes Roberto Mezzina (Trieste, Italy)</p>	
11:45	<p>Lectio Magistralis Chairs: Jan Berndsen (Utrecht, The Netherlands), Gianmaria Galeazzi (Modena, Italy) The Stigma Effect Patrick W. Corrigan (Chicago, IL, USA)</p>	
12:30 - 12:50	<p>Presentation of the Italian version of the FACT (Flexible Assertive Community Treatment) Manual Dutch original version by J.R. (Remmers) van Veldhuizen and M. (Michiel) Bähler (2013, Groningen, The Netherlands) Italian version by Alessandra Martinelli and Mirella Ruggeri (Verona, Italy), Francesco Mungai and Fabrizio Starace (Modena, Italy), 2019</p>	
12:50	Lunch	
13:30	Symposia and Workshops Sessions	Parallel Sessions
15:00	Open coffee during afternoon Conference works	
15:00 - 16:30		Silos di Ponente Lecture Hall
15:00	<p>Mario Chiarini, Tenor <i>E lucevan le stelle (from Tosca by G. Puccini, 1900)</i></p> <p>Lectio Magistralis Chairs: Niels Mulder (Rotterdam, The Netherlands), Sarah Tosato (Verona, Italy) Reform of youth mental health services in the UK : from early psychosis to youth mental health Maximillian Birchwood (Warwick, Coventry, UK)</p>	
15:45	<p>Lectio Magistralis Chairs: Jan Berndsen (Utrecht, The Netherlands), Corrado Barbui (Verona, Italy) The future of community mental health from a European perspective. Policy and practice Claudia Marinetti (Brussels, Belgium)</p>	
16:30	Symposia and Workshops Sessions	Parallel Sessions
18:00	End of 6 Sept. Sessions	
19:30	Social Dinner at Circolo Ufficiali in Castelvecchio	



Conference Program Overview

Saturday, September 7, 2019

8:30	Secretariat opening	
9:00	Oral Presentations Sessions	Parallel Sessions
10:30	<i>Coffee break</i>	
11.00 - 13:30		Silos di Ponente Lecture Hall
11:00	<p>Mario Chiarini, Tenor <i>Libiamo ne' lieti calici (from La Traviata by G. Verdi, 1853)</i></p> <p>Lectio Magistralis Chairs: Marijke van Putten (Leiden, The Netherlands), Francesco Amaddeo (Verona, Italy) The PsyData project; building a learning health system in Psychiatry based on applied data analytics Floortje E. Scheepers (Utrecht, The Netherlands)</p>	
11:45	<p>Lectio Magistralis Chairs: Margret Overdijk (Amsterdam, The Netherlands) ; Lidia del Piccolo (Verona, Italy) Outpatient mental health care in the 21st century: a public health perspective Ronny Bruffaerts (Leuven, Belgium; Ann Arbor, MI, USA)</p>	
12:30	<p>Closing Ceremony and presentation of the 6th EAOF Conference Niels Mulder (Rotterdam, The Netherlands), Mirella Ruggeri (Verona, Italy)</p>	
13:30	<i>Farewell Party at Santa Marta University Building with served food and drinks</i>	

SYMPOSIA - OVERALL VIEW

<p>Thursday 5 14.00-15.30</p>	<p>Room SMT.06 DE CHIRICO Symposium 19 Evidence-oriented services and new organizational models: efficacy vs effectiveness, "organ pipes" services vs user-centered programs <i>Chair: Paola Carozza</i> <i>Speakers:</i> Paola Carozza, Antonella Mastrocchia, Michele Pavanati, Angela Muscettola</p>	<p>Room SMT.01 MICHELANGELO Symposium 13 European Community Mental Health Services Network (EUCOMS): Learning from each other by exchange <i>Chair: Renè Keet</i> <i>Speakers:</i> Niels Mulder, Tor Helge Tjelta, Nils Greve</p>	<p>Room SMT.02 GOYA Symposium 1 Mentalization and RF impairment in a large spectrum of psychopathology: evaluation and treatment <i>Chair: W. Padoani</i> <i>Speakers:</i> Jee Yun Cappelletti, Edgardo Caverzasi, Tommaso Boldrini</p>	<p>Room SMT.03 MUNCH Symposium 6 Cross-sectoral forms of care at the University Medical Center Hamburg-Eppendorf <i>Chair: Jürgen Gallinat</i> <i>Speakers:</i> Martin Lambert, Daniel Lüdecke, Anja Christine Rohenkohl Julia Bierbrodt</p>	<p>Room SMT.04 LIGABUE Symposium 12 Integrating Youth and Mental Health Care Services in Amsterdam <i>Chair: Tijs Jambroes</i> <i>Speakers:</i> Nellieke de Koning, Tijs Jambroes, Reino Stoffelse, Sanne Kleeven</p>	<p>Room SMT.05 VAN GOGH Symposium 7 What about intelligence <i>Chair: Jeanet Nieuwenhuis</i> <i>Speakers:</i> Jeanet Nieuwenhuis, Linda Willems, Ingeborg Berger</p>
<p>Thursday 5 15.30-17.00</p>	<p>Room SMT.06 DE CHIRICO Symposium 14 Public Mental Health. The European Community Mental Health Services network (EUCOMS) <i>Chair: Renè Keet</i> <i>Speakers:</i> Renè Keet, Peter McBride, Mirella Ruggeri, Tiberiu Rotaru</p>	<p>Room SMT.01 MICHELANGELO Symposium 21 YOUNG EAOF GROUP What do young professionals think about human rights? From an overview to a therapeutic experience <i>Chair: Alessandra Martinelli</i> <i>Speakers:</i> Stefano Pillan, Friederike Ruppelt, Stephan Vorst</p>	<p>Room SMT.02 GOYA Symposium 3 Implementation and adaptation of FACT in Scandinavia. Results from Denmark, Sweden and Norway <i>Chair: Anne Landheim</i> <i>Speakers:</i> Anne Landheim, Annika Lexén, Anne Rosenquist</p>	<p>Room SMT.03 MUNCH Symposium 2 Youth F-ACT in the Netherlands: a historical and contemporary overview with illustrations from day-to-day practice <i>Chair: Marieke Broersen</i> <i>Speakers:</i> Hans Kroon, Marieke Broersen, Nynke Frieswijk, Rob Coolen</p>	<p>Room SMT.04 LIGABUE Symposium 36 The challenges of Digital Psychiatry <i>Chair: Marcella Bellani,</i> <i>Paolo Brambilla</i> <i>Speakers:</i> Giuseppe Recchia, Enrico Zanada, Paolo Fedèlì</p>	<p>Room SMT.05 VAN GOGH Symposium 34 Research and development on illness (self-) management and Recovery (IMR) <i>Chair: Bert-Jan Roosenschoon</i> <i>Speakers:</i> Bert-Jan Roosenschoon, M. Brugman, Titus Beentjes</p>
<p>Thursday 5 17.00-18.30</p>	<p>Room SMT.06 DE CHIRICO Symposium 23 Recovery of psychotic disorders. Different ways to go <i>Chair: Niels Mulder</i> <i>Speakers:</i> Pien Leendertse, Bert-Jan Roosenschoon Evelyn van Busse, Cathelijn Tjaden</p>	<p>Room SMT.01 MICHELANGELO Symposium 10 Promising strategies for improving (medication) adherence in patients with psychotic disorders <i>Chair: Ibrahim Önsesveren</i> <i>Speakers:</i> E. L. Noordraven, I. Önsesveren, B. van Aken</p>	<p>Room SMT.02 GOYA Symposium 16 New approaches to implementation of home-treatment in Germany <i>Chair: Julian Schwarz</i> <i>Speakers:</i> Hubertus Friederich, Stefan Weinmann, Stefan Spannhorst, Julian Schwarz</p>	<p>Room SMT.03 MUNCH Symposium 11 Involvement is the key: research-based ideas to improve forensic outpatient care <i>Chair: Marc Boevink</i> <i>Speakers:</i> Rogier van Bemmelen, Lise Swinkels, Annemieke ter Harnsel</p>	<p>Room SMT.04 LIGABUE Symposium 32 Housing First fidelity scale in a Norwegian context. A shift in the services towards recovery <i>Chair: Anne Bergljot Gimmedstad Fjelnseth</i> <i>Speakers:</i> Anne Bergljot Gimmedstad Fjelnseth, Petter Dahle</p>	<p>Room SMT.05 VAN GOGH Symposium 25 Barriers to personal recovery and participation: prevalence, and perspectives, and interventions <i>Chair: Jaap Van Weeghel</i> <i>Speakers:</i> Diana Roeg, Marieke Pijnenborg, Monique van Haaren, Wendy Albers</p>

SYMPOSIA – OVERALL VIEW

Friday 6 13.30–15.00	<p>Silos di Ponente AUDITORIUM</p> <p>Symposium 35 The role of Psychiatric Epidemiology for Community Mental Health Policies</p> <p><i>Chair: Fabrizio Starace</i></p> <p><i>Speakers:</i> Fabrizio Starace, Paolo Stagi, Antonio Lora, Roberto Mezzina, S.P. Sashidharan</p>	<p>Room SMT.01 MICHELANGELO</p> <p>Symposium 27 Development of community mental health care during deinstitutionalization: from policy to people and back</p> <p><i>Chair: Hans Kroon</i></p> <p><i>Speakers:</i> Aafje Knispel, Lex Huisbosch, Christien Muusse, Hans Kroon</p>	<p>Room SMT.02 GOYA</p> <p>Symposium 4 YOUNG EAOF GROUP Shaping mental health community care for the future across Europe</p> <p><i>Chair: Alessandra Martinelli</i></p> <p><i>Speakers:</i> Saskia De Haan, Anja Christine Rohenkol, Alessandra Martinelli</p>	<p>Room SMT.03 MUNCH</p> <p>Symposium 22 Implementing ACT/FACT in Norway through education, networks and manuals</p> <p><i>Chair: Trond Hatling</i></p> <p><i>Speakers:</i> Sita Grepp, Gretha Evensen, Lars Håvard Bakke</p>	<p>Room SMT.04 LIGABUE</p> <p>Symposium 26 Flexible Assertive Community Treatment in Norway. Results from a national research based evaluation</p> <p><i>Chair: Anne Landheim</i></p> <p><i>Speakers:</i> Hanne Clausen, Sigrun Odde, Anne Landheim, Elisabeth Adams Kvam</p>	<p>Room SMT.05 VAN GOGH</p> <p>Symposium 5 First results on the evaluation of cross-sectoral and patient-centered treatment models in Germany</p> <p><i>Chair: Anne Neumann</i></p> <p><i>Speakers:</i> Joachim Salize, Anne Neumann, Bettina Soltmann, Julian Schwarz</p>	<p>Room SMT.06 DE CHIRICO</p> <p>Symposium 8 Trauma, domestic violence and victimization in therapist-client interaction</p> <p><i>Chair: Astrid Kamperman</i></p> <p><i>Speakers:</i> Astrid Kamperman, Ayuk Bakia, Roos Ruijine, A.E. Bonebakker</p>
	Friday 6 16.30–18.00	<p>Silos di Ponente AUDITORIUM</p> <p>Symposium 33 Challenging situations in Diagnostics and Treatment</p> <p><i>Chair: Martin Lambert</i></p> <p><i>Speakers:</i> Daniel Schöttle, Romy Schröter, Daniel Lüdecke</p>	<p>Room SMT.01 MICHELANGELO</p> <p>Symposium 17 Youth-friendly mental health & welfare services</p> <p><i>Chair: Tor Helge Tjelta</i></p> <p><i>Speakers:</i> Tor Helge Tjelta, Nora Mahendran Berge, Torbjørn Mohn-Haugen, Stig Hermann Nygård</p>	<p>Room SMT.02 GOYA</p> <p>Symposium 28 From Flexible Assertive Community Treatment to Collaborative Mental Health Care in the Community</p> <p><i>Chair: Albert Van Keijzerswaard</i></p> <p><i>Speakers:</i> Leonieke Beverloo, Albert van Keijzerswaard, Wilma Swildens</p>	<p>Room SMT.03 MUNCH</p> <p>Symposium 30 United we stand – divided we fall</p> <p><i>Chair: Anne Landheim</i></p> <p><i>Speakers:</i> Bård Grønstøl, Anne Landheim, Elisabeth Adams Kvam</p>	<p>Room SMT.04 LIGABUE</p> <p>Symposium 31 Integrated Mental Health Care in the Community: a new model in the Netherlands, GGZ NHN</p> <p><i>Chair: Renè Keet</i></p> <p><i>Speakers:</i> Renè Keet, Ardan Miedema, Sonja van Rooijen</p>	<p>Room SMT.05 VAN GOGH</p> <p>Symposium 29 Community in the leading role for its mental health. What new roles for psychiatric services?</p> <p><i>Chair: Fabrizio Starace</i></p> <p><i>Speakers:</i> Lorenzo Burti, Ernesto Guerriero, José Mannu, Paolo Vanzini</p>

WORKSHOP - OVERALL VIEW

Thursday 5 14.00-15.30	<p>Room SMT.07 MODIGLIANI</p> <p>Workshop 18 Can structured interventions at the community service-level reduce involuntary admissions to specialist mental health services? <i>Trond Hatling, I. Wormdahl, Tonje L. Husum, Solveig Kyus, J. Rugkåsa</i></p>	<p>Room SMT.08 GAUGUIN</p> <p>Workshop 16 Self-disclosure: Openness about Mental Vulnerability and Strength <i>Shuna Vanner, Sandra Bakker, Jeannette Bakker, Ellen Struik, Clara Koek, Jacqueline van Honk</i></p>	<p>Room SMT.09 DALI</p> <p>Workshop 5 The Brain Becomes What the Brain Does <i>Vince Callahan</i></p>	<p>Room SMT.10 MONET</p> <p>Workshop 2 The Living Museum, creating Outsider Art Utopia's on a Global Scale <i>Rokus Loopik, Rob Haen</i></p>	<p>Room SMT.11 FRIDA KHALO</p> <p>Master Class Training and technical assistances to promote evidence-based practices <i>Lisa Beth Dixon</i></p>
Thursday 5 15.30-17.00	<p>Room SMT.07 MODIGLIANI</p> <p>Workshop 12 Case discussion making use of the Aggression signal guide and the Safewards model <i>Saskia van Duin, Shuna Vanner</i></p>	<p>Room SMT.08 GAUGUIN</p> <p>Workshop 23 Positive Health, Treatment and Recovery: redefining the role of treatment in recovery-oriented mental health <i>Bettina Jacobsen, Marguerite Elfrink</i></p>	<p>Room SMT.09 DALI</p> <p>Workshop 6 Rehabilitation for patients with intellectual disabilities, mental health problems and offending behaviour <i>Otto Has</i></p>	<p>Room SMT.10 MONET</p> <p>Workshop 28 An Integrated CBT treatment for psychosis: Strategies to optimize the treatment and mistakes to avoid <i>Antonio Pinto</i></p>	<p>Room SMT.11 FRIDA KHALO</p> <p>Workshop 21 Battling stigma <i>Marieke Noort, Danny Jacksteit</i></p>
Thursday 5 17.00-18.30	<p>Room SMT.07 MODIGLIANI</p> <p>Workshop 3 The Farm is 'The Champions League' <i>Harry Gras</i></p>	<p>Room SMT.08 GAUGUIN</p> <p>Workshop 17 Leary's Rose A model to manage interactions together within a complex society <i>Bettina Jacobsen, Marguerite Elfrink</i></p>	<p>Room SMT 9 DALI</p> <p>Workshop 7 Psychotherapy for SMI: Just do it! <i>Ellen M.A. Horselenberg, H. Festen</i></p>	<p>Room SMT.10 MONET</p> <p>Workshop 13 Designing a Postgraduate Training Course in Community Mental Health Care for Graduate Nurses <i>C.H.M. Latour, I. Schaap</i></p>	<p>Room SMT.11 FRIDA KHALO</p> <p>Workshop 15 FROM 'TREATING' TO 'HEALING' The power of real connectivity: and how to create this... <i>Sjo Kraaij, Eric Otto</i></p>
Friday 6 13.30-15.00	<p>Room SMT.07 MODIGLIANI</p> <p>Workshop 4 Doing is the best way of thinking Flexible integral approach. One on one personal coaching <i>Harry Gras</i></p>	<p>Room SMT.08 GAUGUIN</p> <p>Workshop 14 Nothing about me, without me, how do you do this in practice <i>Martijn Kole</i></p>	<p>Room SMT 9 DALI</p> <p>Workshop 22 Neighbourhood-oriented offering of treatment and support <i>Machteld van Raalte, Sanne Wullems</i></p>	<p>Room SMT.10 MONET</p> <p>Workshop 25 Mind someone else's business <i>Annemiek Schäfer, Sanne van Houten, Edwin Beld</i></p>	<p>Room SMT.11 FRIDA KHALO</p> <p>Master Class Honest, Open, Proud <i>Patrick W. Corrigan, Luca Pingani</i></p>
Friday 6 16.30-18.00	<p>Room SMT 6 DE CHIRICO</p> <p>Workshop 20 Good Neighbours: inclusion and community building in mixed housing project Place2BU (NL) <i>Suzan Popovic, Maarten Davelaar</i></p>	<p>Room SMT.07 MODIGLIANI</p> <p>Workshop 24 The experience of people with severe mental illness with creative therapies <i>Francisco Rodriguez Pulido, Nayra Caballero Estebanz, Pedro Miguel Martín Cuadrado, Patricia Guillén Barroso</i></p>	<p>Room SMT.08 GAUGUIN</p> <p>Workshop 1 Coordination of Care Dialogue <i>Koen Westen, Pim Peeters</i></p>	<p>Room SMT 9 DALI</p> <p>Workshop 26 An outcome evaluation of assertive community treatment team's (ACTT) stepped care model <i>Scott Pepin, Faisal Islam</i></p>	<p>Room SMT.10 MONET</p> <p>Workshop 27 EX-IN Relatives Accompaniment - Training and Experiences in the work <i>Katharina Nagel</i></p>

ORAL PRESENTATIONS – OVERALL VIEW



<p style="text-align: center;">Friday 6 9.00 – 10.30</p>	<p>Room SMT.01 MICHELANGELO</p> <p>Deinstitutionalization trajectories</p> <p>Mohammed Al-Uzri 021, Rasa Geniené 03, Stephane Morandi 018, Sonja Mötteli 024 Juan José Martínez Jambriña 0100</p>	<p>Room SMT.02 GOYA</p> <p>FACT and ACT interventions - 1</p> <p>Vesna Švab 01, Camilla Munch Nielsen 08, Neels Ehlers 015, Vesna Švab 019, Jasper van Marle 020</p>	<p>Room SMT.03 MUNCH</p> <p>Recovery-oriented community interventions</p> <p>Philippe Delespaul 022, Victoria Stanhope 023, Tommaso Bonavigo 053, Shuna Vanner 029, Danijela Stimac 04</p>	<p>Room SMT.04 LIGABUE</p> <p>FACT and ACT interventions - 2</p> <p>Annika Lexén 050, Wilbert van Gemip-Berbee 058, Marlene Falleras 062, Lianne van der Mooren 063, Marjolein van Dijk 044</p>	<p>Room SMT.05 VAN GOGH</p> <p>Prevention and Early interventions in childhood and adolescence</p> <p>J.W.F. Hogewind (Hans) 041, Sarah Tosato 083, Alessandra Silvestro 072, Marco Colizzi 084, Jessy van den Berg, Hans van Katwijk 076</p>
	<p>Room SMT.06 DE CHIRICO</p> <p>Community management of violent behaviours</p> <p>Clara De Ruysscher 011, David Cantor 02, Benedita Silva 014, Elizabeth Miedema, Martijn van Poecke 078, Fabida Noushad 068</p>	<p>Room SMT.08 GAUGUIN</p> <p>Psychotropic drug use and trials methodology</p> <p>Chiara Gastaldon 091, Giovanni Ostuzzi 086, Davide Papola 093, Jos Dobber 05, Simon Wharne 060</p>	<p>Room SMT.09 DALI</p> <p>Cross cultural mental health care</p> <p>Sione Vaka 016, Chiara Resentera 094, Marianna Purgato 087, Giulia Turrini 090, Rabia Hussain 064</p>	<p>Room SMT.10 MONET</p> <p>Forensic Psychiatry</p> <p>Luca Castelletti 045, Jan van Driel 036, Ester Messina 099, Ellen Otto 033</p>	<p>Room SMT.11 FRIDA KHALO</p> <p>Applications of e-health interventions/Digital health - 1</p> <p>Hamideh Bayrampour 012, Eva van Nunen 025, Martin Lambert 026, Jose de Jager 049, Nancy Major 043</p>
<p style="text-align: center;">Saturday 7 9.00 – 10.30</p>	<p>Room SMT.01 MICHELANGELO</p> <p>Humanised care</p> <p>Isolde M. Busch 085, Maria Betriu Sabate 047, Christian Doensing Soerensen 038</p>	<p>Room SMT.02 GOYA</p> <p>Mental and physical health</p> <p>Pietro Zolli 027, Sajida Naz 059, Iram Gul 067, Christine Cauffield 077</p>		<p>Room SMT.04 LIGABUE</p> <p>Strategies in Severe Mental Illness</p> <p>Maria Mauritz 07, Jose de Jager 048, Miharu Nakanishi 080, Coline van Everdingen 054, Federico Bertolini 092</p>	
	<p>Room SMT.06 DE CHIRICO</p> <p>Peer support and recovery</p> <p>Marty Dijkstra 030, Nicole Kirwan 081, Elizabeth Miedema 079</p>	<p>Room SMT.08 GAUGUIN</p> <p>Decision-Making and social recovery</p> <p>G.H.M. (Marieke) Pijpenborg 074, Alessandra Martinelli 089, Antoinette Ooijevaar 034, Francisco Rodriguez Pulido 069</p>	<p>Room SMT.09 DALI</p> <p>Home care and ACT</p> <p>Ola Johansson 082, Jacques Quintin 017, Juan José Martínez Jambriña 057, Paul Keppel 070, Maurice Topper 032</p>	<p>Room SMT.10 MONET</p> <p>Stigma and users' perception</p> <p>Antonio Lasalvia 097, Sofia Zanolto 095, Bert van de Velde, Bouke Bijnsdorp 073, Antonio Lasalvia 098</p>	<p>Room SMT.11 FRIDA KHALO</p> <p>Applications of e-health interventions/Digital health - 2</p> <p>Monica Eikema 052, Najma Najam 065, Asko Wegetius 071, Ragnhild Krogvig Karlsen 075, Federico Tedeschi 096</p>



Detailed Scientific Program



Thursday, September 5

8:45	Registration and <i>Open Coffee During All Day Conference Works</i>	
9:45	Opening Cerimony	Silos di Ponente Lecture Hall
9:45	<p>Eidos Danza, Verona <i>Ballet on the song CARE by Franco Battiato, 2000</i></p> <hr/> <p>Welcome addresses <i>Mirella Ruggeri, President of the Conference (Verona, Italy)</i> <i>Niels Mulder, President European Assertive Outreach Foundation (EAOF) (Rotterdam, The Netherlands)</i></p> <p>Authorities' greetings <i>Nicola Sartor, Rector University of Verona</i> <i>Manuela Lanzarin, Regional Councillor for Health - Social Services - Social Health Planning, Veneto Region</i> <i>Domenico Mantoan, Director Health and Social Area, Veneto Region</i> <i>Francesco Cobello, General Director, Hospital Trust of Verona</i> <i>Domenico De Leo, President of the Verona Medical School</i> <i>Francesca Briani, Councillor for Culture, Tourism, Youth Politics and Equal Opportunities, Representative of the Major, City Council of Verona</i> <i>Enrico Zanalda, President Società Italiana di Psichiatria (SIP)</i> <i>Fabrizio Starace, President Società Italiana di Epidemiologia Psichiatrica (SIEP)</i> <i>Antonio Lasalvia, President Società Italiana di Psichiatria - Sezione Veneta (PSIVE)</i></p> <hr/> <p>Mario Chiarini, Tenor <i>Nessun Dorma (from Turandot by G. Puccini, 1924)</i></p>	
10:45	<p>Opening Lecture <i>Chairs: Mario Maj (Napoli, Italy), Niels Mulder (Rotterdam, The Netherlands)</i> 10 good reasons to be optimistic about the future of community mental health care and 5 to stay alert <i>Mirella Ruggeri (Verona, Italy)</i></p>	
11:30	<p>Lectio Magistralis <i>Chairs: Mario Maj (Napoli, Italy), Bernardo Carpiniello (Cagliari, Italy)</i> Using Implementation Science and a Learning Health Care System Framework to Improve the Quality of Care <i>Lisa Beth Dixon (New York, USA)</i></p>	
12:15	<p>Lectio Magistralis <i>Chairs: Margret Overdijk (Amsterdam, The Netherlands), Antonio Lasalvia (Verona, Italy)</i> Integrated Care in adolescents with mental disorders and the role of transition psychiatry <i>Anne Karow (Hamburg, Germany)</i></p>	
13:00	Lunch	



Thursday, September 5

14:00 - 15:30	Symposia Sessions	Parallel Sessions
Room SMT.06 DE CHIRICO	<p>Symposium 19 EVIDENCE-ORIENTED SERVICES AND NEW ORGANIZATIONAL MODELS: EFFICACY VS EFFECTIVENESS, "ORGAN PIPES" SERVICES VS USER-CENTERED PROGRAMS <i>Chair: Paola Carozza (Ferrara, Italy)</i></p> <p>Critical issues in the implementation of EBPs in "dirty" service settings: from efficacy to effectiveness <i>Paola Carozza (Ferrara, Italy), A. Mastrocola</i></p> <p>Multidimensionality of mental illness: from an "organ pipes" organizational model to user-centered interdisciplinary programs <i>Michele Pavanati (Ferrara, Italy), B. Girotto, B. Cocchi</i></p> <p>Illness Management and Recovery, effective EBP in the vulnerability / stress / coping model <i>Angela Muscettola (Ferrara, Italy), M. Sacco, F. Catera</i></p>	
Room SMT.01 MICHELANGELO	<p>Symposium 13 EUROPEAN COMMUNITY MENTAL HEALTH SERVICES NETWORK (EUCOMS): LEARNING FROM EACH OTHER BY EXCHANGE <i>Chair: Renè Keet (Heerhugowaard, The Netherlands)</i></p> <p>Community mental health services in Europe: Learning from each other with an exchange tool <i>Niels Mulder (Rotterdam, The Netherlands), M. Ruggeri</i></p> <p>Lessons learned in an exchange between community mental health services in Norway and Andalusia (Spain) <i>Tor Helge Tjelta (Oslo, Norway), E. Huizing</i></p> <p>Learning from each other between Germany and The Netherlands: The Dachverband Gemeindepsychiatrie and Lister <i>Nils Greve (Solingen, Germany), J. Berndsen</i></p>	
Room SMT.02 GOYA	<p>Symposium 1 MENTALIZATION AND RF IMPAIRMENT IN A LARGE SPECTRUM OF PSYCHOPATOLOGY: EVALUATION AND TREATMENT <i>Chair: W. Padoani (Camposampiero, PD, Italy)</i></p> <p>BPD patients: preliminary outcome evaluation and process analysis in MBT treatment at Camposampiero MHC <i>Jee Yun Cappelletti (Padova, Italy), W. Padoani, A. Frasson, G. Pandolfi, S. Carrera, S. Salcuni</i></p> <p>Evaluation of mentalization impairment in a sample of BPD Patients treated in an Outpatient Italian Unit <i>Edgardo Caverzasi (Pavia, Italy), P. Ambrosi</i></p> <p>Exploring the Role of Attachment Patterns, Mentalization, Infant Trauma in the Prodromal Phase of Schizophrenia <i>Tommaso Boldrini (Padova, Italy), S. Salcuni, V. Lingiardi</i></p>	



Thursday, September 5

<p>Room SMT.03 MUNCH</p>	<p>Symposium 6 CROSS-SECTORAL FORMS OF CARE AT THE UNIVERSITY MEDICAL CENTER HAMBURG-EPPENDORF <i>Chair: Jürgen Gallinat (Hamburg, Germany)</i></p> <p>RECOVER - Model of a severity graded, cross-sector coordinated and evidence-based care for psychiatric disorders <i>Martin Lambert (Hamburg, Germany), A. Karow, V. Kraft</i></p> <p>Crisis Resolution Team - Acute treatment in the home environment <i>Daniel Lüdecke (Hamburg, Germany), A. Karow, J. Gallinat, M. Lambert</i></p> <p>Integrated care including assertive community treatment for psychoses <i>Anja Christine Rohenkohl (Hamburg, Germany), F. Ruppelt, M. Lambert, A. Bussopulos - Orpin & IV Team</i></p> <p>Integrated care – Borderline – A treatment concept for patients with severe Borderline Personality Disorder <i>Julia Bierbrodt (Hamburg, Germany), K. Krog, I. Schäfer, A. Schindler</i></p>	
<p>Room SMT.04 LIGABUE</p>	<p>Symposium 12 INTEGRATING YOUTH AND MENTAL HEALTH CARE SERVICES IN AMSTERDAM <i>Chair: Tijs Jambroes (Amsterdam, The Netherlands)</i></p> <p>Building bridges between youth care and child and adolescent psychiatry <i>Nellieke de Koning (Amsterdam, The Netherlands)</i></p> <p>Forensic outreach care for adolescents: Integrating two working models <i>Tijs Jambroes (Amsterdam, The Netherlands), M. Kloosterman, M. van de Velde, J. Terpstra, M. Melissen</i></p> <p>Outreach psychiatric care in various open residential youth care settings, 7-years of collaboration <i>Reino Stoffelsen (Amsterdam, The Netherlands), M. Ooms, A. Popma</i></p> <p>Family oriented care: treatment at home after placement in a closed treatment facility <i>Sanne Kleeven (Amsterdam, The Netherlands), M. Dijks, G. Hogema</i></p>	
<p>Room SMT.05 VAN GOGH</p>	<p>Symposium 7 WHAT ABOUT INTELLIGENCE <i>Chair: Jeanet Nieuwenhuis (Warsnveld, The Netherlands)</i></p> <p>Prevalence of Mild Intellectual Disability and Borderline Intellectual Functioning in different settings in Mental Healthcare in the Netherlands; MID and BIF a highway to chronicity? <i>Jeanet Nieuwenhuis (Warsnveld, The Netherlands), E.O. Noorthoorn, H.L.I. Nijman, C.L. Mulder</i></p> <p>How to make a MID friendly organisation? <i>Linda Willems (Zutphen, The Netherlands)</i></p> <p>Modifications in recovery-focused therapy for patients with severely mentally illness and intellectual disability <i>Ingeborg Berger (Carnissewijk/Zuidplein, The Netherlands), M. van Hout</i></p>	
<p>14:00 - 15:30</p>	<p>Workshops Sessions</p>	<p>Parallel Sessions</p>
<p>Room SMT.07 MODIGLIANI</p>	<p>Workshop 18 CAN STRUCTURED INTERVENTIONS AT THE COMMUNITY SERVICE-LEVEL REDUCE INVOLUNTARY ADMISSIONS TO SPECIALIST MENTAL HEALTH SERVICES? <i>Trond Hatling (Trondheim, Norway), I. Wormdahl, T.L. Husum, S. Kjus, J. Rugkåsa</i></p>	
<p>Room SMT.08 GAUGUIN</p>	<p>Workshop 16 SELF DISCLOSURE: OPENNESS ABOUT MENTAL VULNERABILITY AND STRENGTH <i>Shuna Vanner (Heerhugowaard, The Netherlands), S. Bakker, J. Bakker, E. Struik, C. Koek, J. van Honk</i></p>	



Thursday, September 5

Room SMT.09 DALÍ	Workshop 5 THE BRAIN BECOMES WHAT THE BRAIN DOES <i>Vince Callahan (Centurion of Florida, FL, US)</i>	
Room SMT.10 MONET	Workshop 2 THE LIVING MUSEUM, CREATING OUTSIDER ART UTOPIA'S ON A GLOBAL SCALE <i>Rokus Loopik (Tilburg, The Netherlands), R. Haen</i>	
Room SMT.11 FRIDA KHALO	Master Class TRAINING AND TECHNICAL ASSISTANCES TO PROMOTE EVIDENCE-BASED PRACTICES <i>Lisa Beth Dixon (New York, USA)</i>	
		
15:30 - 17:00	Symposia Sessions	Parallel Sessions
Room SMT.06 DE CHIRICO	Symposium 14 PUBLIC MENTAL HEALTH. THE EUROPEAN COMMUNITY MENTAL HEALTH SERVICES NETWORK (EUCOMS) <i>Chair: Renè Keet (Heerhugowaard, The Netherlands)</i> Introduction to Public Mental health <i>Renè Keet (Heerhugowaard, The Netherlands)</i> Public Mental health a post conflict area: Northern Ireland <i>Peter McBride (Belfast, Northern Ireland)</i> Public Mental Health in the Verona area <i>Mirella Ruggeri (Verona, Italy)</i> Public health versus public mental health in Romania <i>Tiberiu Rotaru (Siret, Romania)</i>	
Room SMT.01 MICHELANGELO	Symposium 21 YOUNG EAOFF GROUP WHAT DO YOUNG PROFESSIONALS THINK ABOUT HUMAN RIGHTS? FROM AN OVERVIEW TO A THERAPEUTIC EXPERIENCE <i>Chair: Alessandra Martinelli (Verona, Italy)</i> Stigma and the Human Rights of people with mental disorders <i>Stefano Pillan (Verona, Italy), A. Lasalvia</i> Psychotherapeutic aspects in assertive outreach within an integrated care model <i>Friederike Ruppelt (Hamburg, Germany), A. Rohenkohl, M. Lambert, A. Bussopulos & IV Team</i> Views on stigma in Dutch society <i>Stephan Vorst (Heiloo, The Netherlands)</i>	
Room SMT.02 GOYA	Symposium 3 IMPLEMENTATION AND ADAPTION OF FACT IN SCANDINAVIA. RESULTS FROM DENMARK, SWEDEN AND NORWAY <i>Chair: Anne Landheim (Ottestad, Norway)</i> Implementation and adaption of FACT in Norway from 2014-2019 <i>Anne Landheim (Ottestad, Norway), S. Odden, K. Nysveen, T. Hatling, G. Strand, E. Hoxmark, G. Evensen</i> FACT implementation, adaption and results in Sweden 2013-2019 <i>Annika Lexén (Lund, Sweden), U. Bejerholm, U. Markström, L. Hansson, G. Cruce, B. Svensson</i> Implementation and adaption of FACT in Denmark <i>Anne Rosenquist (Ottestad, Norway), C. Munch Nielsen</i>	



Thursday, September 5

<p>Room SMT.03 MUNCH</p>	<p>Symposium 2 YOUTH F-ACT IN THE NETHERLANDS: A HISTORICAL AND CONTEMPORARY OVERVIEW WITH ILLUSTRATIONS FROM DAY-TO-DAY PRACTICE <i>Chair: Marieke Broersen (Oss, The Netherlands)</i></p> <p>Monitoring the deinstitutionalization process over time. Are we heading in the right direction? <i>Hans Kroon (Oss, The Netherland)</i></p> <p>Characteristics of adolescents in Youth F-ACT care: baseline analyses of a prospective observational cohort study <i>Marieke Broersen (Oss, The Netherlands)</i></p> <p>Maintaining the momentum in Youth F-ACT teams: its strengths and challenges <i>Nynke Frieswijk (Oss, The Netherlands)</i></p> <p>Experiences of Youth F-ACT in daily practice: a case example of treating childhood trauma <i>Rob Coolen (Oss, The Netherlands)</i></p>
<p>Room SMT.04 LIGABUE</p>	<p>Symposium 36 THE CHALLENGES OF DIGITAL PSYCHIATRY <i>Chair: Marcella Bellani (Verona, Italy), Paolo Brambilla (Milano, Italy)</i></p> <p>Digital Therapeutics DTx – Research and Development of a new, innovative Digital Health Technology <i>Giuseppe Recchia (Verona, Italy), M. Beccaria, M. Vergnano, V. Rosso</i></p> <p>Experience with IFightDepression <i>Enrico Zanalda (Verona, Italy), Y. Sacco, A. Signorino, M.L. Perucchini, P. Giaccone</i></p> <p>Smart Health: how to integrate DTx in healthcare and clinical practice <i>Paolo Fedeli (Verona, Italy)</i></p>
<p>Room SMT.05 VAN GOGH</p>	<p>Symposium 34 RESEARCH AND DEVELOPMENT ON ILLNESS (SELF-) MANAGEMENT AND RECOVERY (IMR) <i>Chair: Bert-Jan Roosenschoon (Rotterdam, The Netherlands)</i></p> <p>Effectiveness of illness management and recovery (IMR); Some results of an RCT in the Netherlands <i>Bert-Jan Roosenschoon (Rotterdam, The Netherlands), J. Van Weeghel, A.M. Kamperman, M.L. Deen, C.L. Mulder</i></p> <p>Updating of the Illness Management and Recovery Programme, towards IMR 4.0 <i>M. Brugman (Rotterdam, The Netherlands), A.D. Bergsma, T. Beentjes</i></p> <p>Self-Management Support Needs as reported by People with Severe Mental Illness, Thematic Synthesis of Qualitative Research <i>Titus Beentjes (Rotterdam, The Netherlands), B. van Gaal, T. van Achterberg, P. Goossens</i></p> <p>The qualitative evaluation of an e-supported Illness Management and Recovery program for people with SMI <i>Titus Beentjes (Rotterdam, The Netherlands), B.G.I. van Gaal, P.J.J. Goossens, H. Vermeulen, M.W.G. Nijhuis-van der Sanden</i></p>



Thursday, September 5

15:30 - 17:00	Workshops Sessions	Parallel Sessions
Room SMT.07 MODIGLIANI	Workshop 12 CASE DISCUSSION MAKING USE OF THE AGRESSION SIGNAL GUIDE AND THE SAFEWARDS MODEL <i>Saskia van Duin (Heerhugowaard, The Netherlands), S. Vanner</i>	
Room SMT.08 GAUGUIN	Workshop 23 POSITIVE HEALTH, TREATMENT AND RECOVERY: REDEFINING THE ROLE OF TREATMENT IN RECOVERY ORIENTED MENTAL HEALTH <i>Bettina Jacobsen (Nijmegen, The Netherlands), M. Elfrink</i>	
Room SMT.09 DALI	Workshop 6 REHABILITATION FOR PATIENTS WITH INTELLECTUAL DISABILITIES, MENTAL HEALTH PROBLEMS AND OFFENDING BEHAVIOUR <i>Otto Has (Utrecht, The Netherlands)</i>	
Room SMT.10 MONET	Workshop 28 AN INTEGRATED CBT TREATMENT FOR PSYCHOSIS: STRATEGIES TO OPTIMIZE THE TREATMENT AND MISTAKES TO AVOID <i>Antonio Pinto (Napoli, Italy)</i>	
Room SMT.11 FRIDA KHALO	Workshop 21 BATTLING STIGMA <i>Marieke Noort (Heerhugowaard, The Netherlands), D. Jacksteit</i>	
17:00 - 18:30	Symposia Sessions	Parallel Sessions
Room SMT.06 DE CHIRICO	Symposium 23 RECOVERY OF PSYCHOTIC DISORDERS. DIFFERENT WAYS TO GO <i>Chair: Niels Mulder (Rotterdam, The Netherlands)</i> Promoting personal recovery in psychosis – a systematic review <i>Pien Leendertse (Middelburg, The Netherlands), A.M. Ruissen, D.P.G. van den Berg, S. Castelein, C.L. Mulder</i> Pathways to clinical, functional and personal recovery for people with schizophrenia and other severe mental illnesses <i>Bert-Jan Roosenschoon (Rotterdam, The Netherlands), J. van Weeghel, M.L. Deen, A.M. Kamperman, C. L. Mulder</i> Adult attachment and the challenge to recover for individuals who have to deal with psychosis: A systematic review <i>Evelyn van Bussel (Boekel, The Netherlands), M. Nguyen, A. Wierdsma, N. Mulder</i> Attachment as a framework to facilitate empowerment for people with severe mental illness: a cross-sectional study <i>Cathelijnn Tjaden (Utrecht, The Netherlands), A. Arntz, A.E.G. Delespaul, H. Kroon, C.L. Mulder</i>	



Thursday, September 5

<p>Room SMT.01 MICHELANGELO</p>	<p>Symposium 10 PROMISING STRATEGIES FOR IMPROVING (MEDICATION) ADHERENCE IN PATIENTS WITH PSYCHOTIC DISORDERS <i>Chair: Ibrahim Önsesveren (Rotterdam, The Netherlands)</i> Money for Medication: a randomised controlled trial for improving antipsychotic medication adherence using financial incentives <i>E.L. Noordraven (Rotterdam, The Netherlands), A. Wierdsma, A.F.T Bloemendaal, A.B.S Staring, C.L. Mulder</i> Time to discontinuation with different antipsychotic formulations in schizophrenia: a claims data based study <i>I. Önsesveren (Rotterdam, The Netherlands), A. van der Lee, A. Wierdsma, L. de Haan, C.L. Mulder</i> Executive functioning: a new way to improve therapy adherence? A literature review <i>B. van Aken (Rotterdam, The Netherlands), A. Wierdsma, A. Bakia, C.L. Mulder</i></p>
<p>Room SMT.02 GOYA</p>	<p>Symposium 16 NEW APPROACHES TO IMPLEMENTATION OF HOME-TREATMENT IN GERMANY <i>Chair: Julian Schwarz (Berlin, Germany)</i> "Stationsäquivalente Behandlung" a new concept: Experiences and evaluation results from a rural catchment area <i>Hubertus Friederich (Alb-Neckar, Germany)</i> Practical experiences of implementing home-treatment in an urban catchment area <i>Stefan Weinmann (Berlin, Germany), A. Bechdorf</i> Home-treatment in geriatric psychiatry – advantages and challenges in dealing with people with dementia <i>Stefan Spannhorst (Stuttgart, Germany)</i> Obstacles to implementation of home-treatment – a qualitative exploration of the staff experiences <i>Julian Schwarz (Berlin, Germany), S. von Peter</i></p>
<p>Room SMT.03 MUNCH</p>	<p>Symposium 11 INVOLVEMENT IS THE KEY: RESEARCH-BASED IDEAS TO IMPROVE FORENSIC OUTPATIENT CARE <i>Chair: Marc Boevink (Amsterdam, The Netherlands)</i> Factors influencing treatment responsiveness in forensic outpatient care <i>Rogier van Bemmelen (Amsterdam, The Netherlands)</i> Forensic Network Coaching: improving social networks among a forensic psychiatric outpatient population <i>Lise Swinkels (Amsterdam, The Netherlands), A. Popma, J. Dekker, T. van der Pol</i> Sense-IT: biofeedback in forensic outpatients with problematic aggressive behaviour <i>Annemieke ter Harmsel (Amsterdam, The Netherlands), A. Popma, A. Goudriaan, M. Noordzij, T. van der Pol</i></p>
<p>Room SMT.04 LIGABUE</p>	<p>Symposium 32 HOUSING FIRST FIDELITY SCALE IN A NORWEGIAN CONTEXT. A SHIFT IN THE SERVICES TOWARDS RECOVERY <i>Chair: Anne Bergljot Gimmestad Fjelnseth (Trondheim, Norway)</i> The original model compared to the Norwegian welfare state <i>Anne Bergljot Gimmestad Fjelnseth (Trondheim, Norway)</i> The use of the fidelity scale in Housing First Norway <i>Anne Bergljot Gimmestad Fjelnseth (Trondheim, Norway)</i> Inclusion of peer-workers in the Housing First-teams as a result of fidelity scoring <i>Petter Dahle (Trondheim, Norway)</i> A change in the services as an outcome of the fidelity scale <i>Petter Dahle (Trondheim, Norway)</i></p>



Thursday, September 5

<p>Room SMT.05 VAN GOGH</p>	<p>Symposium 25 BARRIERS TO PERSONAL RECOVERY AND PARTICIPATION: PREVALENCE, PERSPECTIVES, AND INTERVENTIONS <i>Chair: Jaap van Weeghel (Tilburg, The Netherlands)</i></p> <p>Recovery interventions for persons with severe and persistent mental illness: A scoping review <i>Diana Roeg (Tilburg, The Netherlands), N.A. Bitter, C. van Nieuwenhuizen, J. van Weeghel</i></p> <p>Prevalence and risk factors of victimization in patients with a psychotic disorder <i>Marieke Pijnenborg (Groeningen, The Netherlands), B. de Vries, J.T. van Busschbach, E.C.D. van der Stouwe, A. Aleman et al.</i></p> <p>Developing a Working Alliance instrument for clients of outpatient multidisciplinary teams with shared caseloads <i>Monique van Haaren (Nijmegen, The Netherlands), D.P.K. Roeg, S. de Jong</i></p> <p>Victoria: Evaluation of a victimization and discrimination informed intervention to re-boost rehabilitation and personal recovery <i>Wendy Albers (Tilburg, The Netherlands), D.P.K. Roeg, Y.A.M. Nijssen, J. van Weeghel, I.M.B. Bongers</i></p>	
<p>17:00 - 18:30</p>	<p>Workshops Sessions</p>	<p>Parallel Sessions</p>
<p>Room SMT.07 MODIGLIANI</p>	<p>Workshop 3 THE FARM IS 'THE CHAMPIONS LEAGUE' <i>Harry Gras (Utrecht, The Netherlands)</i></p>	
<p>Room SMT.08 GAUGUIN</p>	<p>Workshop 17 LEARY'S ROSE A MODEL TO MANAGE INTERACTIONS TOGETHER WITHIN A COMPLEX SOCIETY <i>Bettina Jacobsen (Nijmegen, The Netherlands), Marguerite Elfrink</i></p>	
<p>Room SMT.09 DALÍ</p>	<p>Workshop 7 PSYCHOTHERAPY FOR SMI: JUST DO IT! <i>Ellen M.A. Horsselenberg (Drenthe, The Netherlands), H. Festen</i></p>	
<p>Room SMT.10 MONET</p>	<p>Workshop 13 DESIGNING A POSTGRADUATE TRAINING COURSE IN COMMUNITY MENTAL HEALTH CARE FOR GRADUATE NURSES <i>C.H.M. Latour (Amsterdam, The Netherlands), I. Schaap</i></p>	
<p>Room SMT.11 FRIDA KHALO</p>	<p>Workshop 15 FROM 'TREATING' TO 'HEALING' · THE POWER OF REAL CONNECTIVITY! AND HOW TO CREATE THIS... <i>Sjo Kraaij (Heerhugowaard, The Netherlands), E. Otto</i></p>	
<p>18:30</p>	<p>End of 5 Sept. Sessions</p>	
<p>19:00</p>	<p>Welcome Cocktail at Santa Marta University Building</p>	



Friday, September 6

8:30	Secretariat opening	
9:00 - 10:30	Oral Presentations Sessions	Parallel Sessions
Room SMT.01 MICHELANGELO	<p>DEINSTITUTIONALIZATION TRAJECTORIES <i>Chair and Co-Chair: Sonja Mötteli (Zurich, Switzerland), Lorenzo Burti (Verona, Italy)</i></p> <p>Impact of CTO on beds usage in assertive outreach <i>Mohammed Al-Uzri (Leicestershire, UK)</i></p> <p>Shaping deinstitutionalization: one for all vs. all against one <i>Rasa Genienė (Vilnius, Lithuania)</i></p> <p>Identifying patterns of psychiatric hospitalizations: towards a typology of postdeinstitutionalization trajectories <i>Stephane Morandi (Lausanne, Switzerland), P. Conus, C. Bonsack, P. Golay</i></p> <p>Is Home Treatment suitable for patients with involuntary admissions to a psychiatric hospital? <i>Sonja Mötteli (Zurich, Switzerland), P. Stix</i></p> <p>The Avilés Assertive Outreach Team (199-2019). Twenty years of experience <i>Juan José Martínez Jambriña (Avilés, Spain), A. Durán Rivas, J. Moreno Vela, C. Oliván Roldán</i></p>	
Room SMT.02 GOYA	<p>FACT AND ACT INTERVENTIONS – 1 <i>Chair and Co-Chair: Jasper van Marle (Drenthe, The Netherlands), Michela Nosé (Verona, Italy)</i></p> <p>FACT teams: development in Slovenia and implementation with the National Resolution for Mental Health <i>Vesna Švab (Ljubljana, Slovenia)</i></p> <p>The effectiveness of Flexible Assertive Community Treatment - A quasi-experimental controlled study <i>Camilla Munch Nielsen (Copenhagen, Denmark), C. Hjorthøj, M. Nordentoft</i></p> <p>Assertive Outreach, Community Treatment Orders and Quality of Life Assessment <i>Neels Ehlers (Red Deer, AB, Canada)</i></p> <p>Implementation of National Mental Health Plan 2018-2028 in Slovenia through prevention, promotion and FACT <i>Vesna Švab (Ljubljana, Slovenia)</i></p> <p>FACT 3.0, working in a neighborhood without "segregation" of caregivers <i>Jasper van Marle (Drenthe, The Netherlands), W. Kemp, R. den Ouden</i></p>	
Room SMT.03 MUNCH	<p>RECOVERY-ORIENTED COMMUNITY INTERVENTIONS <i>Chair and Co-Chair: Philippe Delespaul (Maastricht, The Netherlands), Tommaso Bonavigo (Trieste, Italy)</i></p> <p>Collaborating between mental health and welfare: Neighborhood care in the Dutch New Mental Health Movement <i>Philippe Delespaul (Maastricht, The Netherlands)</i></p> <p>Delivering Person-Centered Care in the Community <i>Victoria Stanhope (New York, USA), M. Choy-Brown, L. Jessell</i></p> <p>Through dependency to recovery: users' and professionals' opinions in the Mental Health Department of Trieste <i>Tommaso Bonavigo (Trieste, Italy), F. Sandri</i></p> <p>RecoverE: implementation of community mental health teams in 5 European countries <i>Shuna Vanner (Heerhugowaard, The Netherlands)</i></p> <p>Reorientation of Mental Healthcare in Croatia and the mindset <i>Danijela Stimac (Zagreb, Republic of Croatia), H. Koetsier</i></p>	



Friday, September 6

<p>Room SMT.04 LIGABUE</p>	<p>FACT AND ACT INTERVENTIONS – 2 <i>Chair and Co-Chair: Marlene Falieras (Oslo, Norway), Annika Lexén (Lund, Sweden)</i></p> <p>Stakeholder perceptions of implementing Flexible ACT in general mental health services in Sweden <i>Annika Lexén (Lund, Sweden), U. Bejerholm</i></p> <p>F-ACT+; Integrated care for Flexible Assertive Community Treatment in Dutch psychiatric and addiction healthcare <i>Wilbert van Gennip-Berbee (Sneek, The Netherlands), F. Ubbink, L. van Sinderen, W. Kostwinder</i></p> <p>FACT team for people with substance use disorders (SUD): practical considerations and preliminary results <i>Marlene Falieras (Oslo, Norway), E. Borger Rognli, E. Hummelsund, L.E. Couëssurel Wüsthoff, A. Signe Landheim</i></p> <p>Is double diagnosis “triple trouble”? Outcomes of social recovery focused treatment of an ACT team <i>Lianne van der Mooren (Nijmegen, The Netherlands), B. Jacobsen, H. Gijsman</i></p> <p>After FACT: how well do clients manage after discharge from a FACT team? <i>Marjolein van Dijk, (Heerhugowaard, The Netherlands), F. Engelsbel, A. Nugter</i></p>
<p>Room SMT.05 VAN GOGH</p>	<p>PREVENTION AND EARLY INTERVENTIONS IN CHILDHOOD AND ADOLESCENCE <i>Chair and Co-Chair: J.W.F. Hogewind (Hans) (Hoorn, The Netherlands), Sarah Tosato (Verona, Italy)</i></p> <p>A Pilot Study of the Cost-effectiveness of Youth F-ACT in the Netherlands <i>J.W.F. Hogewind (Hans) (Hoorn, The Netherlands), M. A. Nugter</i></p> <p>The effect of childhood adversities on biomarkers related to glucose metabolism in First-Episode Psychosis patients <i>Sarah Tosato (Verona, Italy), C. Bonetto, S. Tomassi, D. Cristofalo, M. Gennarelli, A. Lasalvia, C. Favarelli, M. Ruggeri, L. Bocchio Chiavetto and the GET UP group</i></p> <p>The integration of innovative First Episode Psychosis models of treatment in a standard psychiatric service <i>Alessandra Silvestro (Padova, Italy), A. Gatto, L. Martini, A. Cozzi, M.L. Sguotto</i></p> <p>The role of cannabis use in provoking psychosis onset and precipitating relapse and hospital readmission <i>Marco Colizzi (Verona, Italy), R. Murray, M. Di Forti, S. Bhattacharyya</i></p> <p>Autistic students and how they live their lives at the Casa Confetti project <i>Jessy van den Berg (Utrecht, The Netherlands), H. van Katwijk</i></p>
<p>Room SMT.06 DE CHIRICO</p>	<p>COMMUNITY MANAGEMENT OF VIOLENT BEHAVIOURS <i>Chair and Co-Chair: David Kantor (Oakville, ON, Canada), Katia De Santi (Verona, Italy)</i></p> <p>Reflections on epistemic violence and dialogue in mental health care research <i>Clara De Ruysscher (Ghent, Belgium), P. Tomlinson</i></p> <p>Community Treatment Orders- Varying Effectiveness in Different Jurisdictions <i>David Kantor (Oakville, ON, Canada)</i></p> <p>Involuntary hospitalisations for psychiatric patients in Switzerland: epidemiology and associated factors <i>Benedetta Silva, (Lausanne, Switzerland), P. Golay, S. Morandi</i></p> <p>Non-Violent Resistance for FACT families <i>Elizabeth Miedema (Hoorn, The Netherlands), M. van Poecke</i></p> <p>Managing vulnerability and harm in communities using a multi agency team <i>Fabida Noushad (Leicester, UK), M. Al-Uzri, V. Noble, V. Petit, A. Williams, R. Franklin, M. Everest, N. Hill, E. Harrison</i></p>



Friday, September 6

<p>Room SMT.08 GAUGUIN</p>	<p>PSYCHOTROPIC DRUG USE AND TRIALS METHODOLOGY <i>Chair and Co-Chair: Chiara Gastaldon (Verona, Italy), Jos Dobber (Amsterdam, The Netherlands)</i></p> <p>Nice Guidelines: are psychosocial intervention trials for psychoses really pragmatic? <i>Chiara Gastaldon (Verona, Italy), F. Mosler, S. Toner, F. Tedeschi, V. Bird, C. Barbui, S. Priebe</i></p> <p>Issues in the implementation of pragmatic randomized trials in highly complex populations <i>Giovanni Ostuzzi (Verona, Italy), C. Gastaldon, D. Papola, C. Barbui</i></p> <p>How much can we trust meta-analyses findings? The case of antipsychotics and lifethreatening adverse events <i>Davide Papola (Verona, Italy), C. Gastaldon, G. Ostuzzi, C. Barbui</i></p> <p>Motivational interviewing for medication adherence: active ingredients and patienttherapist interaction in patients with schizophrenia <i>Jos Dobber (Amsterdam, The Netherlands), C. Latour, B. van Meijel, G. ter Riet, E. Barkhof, L. de Haan</i></p> <p>From institution-based treatment, to community-based recovery: Action Research in the UK <i>Simon Wharne (London, UK), D. Elletson, R. West</i></p>
<p>Room SMT.09 DALÍ</p>	<p>CROSS CULTURAL MENTAL HEALTH CARE <i>Chair and Co-Chair: Chiara Resentera (Verona, Italy), Sione Vaka (Auckland, New Zealand)</i></p> <p>The effectiveness of ūloa model, a Tongan model of care <i>Sione Vaka (Auckland, New Zealand)</i></p> <p>Low intensity psychosocial interventions for preventing mental disorders in refugee populations in Europe <i>Chiara Resentera (Verona, Italy), M. Nosè, G. Turrini, M. Purgato, G. Ostuzzi, F. Tedeschi, E. Zanini, C. Barbui</i></p> <p>"How" and "for whom" psychosocial interventions work in humanitarian settings? - Individual-Participant-Data meta-analysis from 3143 children <i>Marianna Purgato (Verona, Italy), F. Tedeschi, T.S. Betancourt, P. Bolton, C. Bonetto, C. Gastaldon, S. Gordon, P. O'Callaghan, D. Papola, K. Peltonen, R.L. Punamaki, J. Richards, J.K. Staples, J. Unterhitzengerger, J. de Jong, A.L. Jordans-Gross, W.A. Tol, C. Barbui</i></p> <p>Psychological distress and psychiatric disorders in asylum seekers and refugees: an Italian epidemiological study <i>Giulia Turrini (Verona, Italy), M. Nosè, F. Tedeschi, L.Tarsitani, L. Todini, P. Massetti, V. Roselli, F. Cucchi, M. Ruggeri, C. Barbui</i></p> <p>Neurological Functioning of Elderly Population in Gilgit-Baltistan A Comparative Study of Gilgit & Skardu <i>Rabia Hussain (Islamabad, Pakistan), N. Najam</i></p>
<p>Room SMT.10 MONET</p>	<p>FORENSIC PSYCHIATRY <i>Chair and Co-Chair: Luca Castelletti (Verona, Italy), Jan van Driel (Amsterdam, The Netherlands)</i></p> <p>Italian reform of forensic psychiatry: a hazardous model or a new paradigm for forensic care? <i>Luca Castelletti (Verona, Italy), C. Piazza, S. Bissoli</i></p> <p>Outreach care and motivation <i>Jan van Driel (Amsterdam, The Netherlands), E. Lamens, R. Willems, L. Maas, Y. Zafiriz, L. de Waal Malefijt</i></p> <p>The PERSON Project (ProcEss, Rehabilitation, Service use, Outcome and Needs in community forensic patients): results from a three-year observational study <i>Ester Messina (Verona, Italy)</i></p> <p>SUCSESFUL TOWARDS A DIPLOMA: where mental health care and regular education join forces <i>Ellen Otto (Heerhugowaard, The Netherlands), L. van der Zee</i></p>



Friday, September 6

Room SMT.11 FRIDA KHALO	<p>APPLICATIONS OF E-HEALTH INTERVENTIONS/DIGITAL HEALTH – 1 <i>Chair and Co-Chair: Martin Lambert (Hamburg, Germany), Marcella Bellani (Verona, Italy)</i></p> <p>Effectiveness of eHealth Interventions to Reduce Perinatal Anxiety: A Systematic Review and Meta-analysis <i>Hamideh Bayrampour (Vancouver, Canada), J. Trieu, T. Tharmaratnam</i></p> <p>Could physiological biofeedback and Virtual Reality support patients with a Generalized Anxiety Disorder to relax? <i>Eva van Nunen, (Eindhoven, The Netherlands), C. van den Broek, L.J.A.E. Snpaahan</i></p> <p>E-Mental-Health as part of severity graded and cross-sector coordinated care <i>Martin Lambert (Hamburg, Germany), A. Karow, V. Kraft</i></p> <p>Virtual Reality Exposure treatment for people with anxiety in the social world <i>Jose de Jager (Dokkum, The Netherlands)</i></p> <p>Increase autonomy of patients by use of e-health '24/7 accessibility through telecare' <i>Nancy Majoor (Heerhugowaard, The Netherlands), R. Wubs</i></p>	
10:30	Coffee break	
11:00 - 12:30	Plenary Lectures	Silos di Ponente Lecture Hall
11:00	<p>Mario Chiarini, Tenor <i>Va' Pensiero (from Nabucco by G. Verdi, 1842)</i></p> <hr/> <p>Lectio Magistralis <i>Chairs: Marijke van Putten (Leiden, The Netherlands), Lorenzo Burti (Verona, Italy)</i></p> <p>Deinstitutionalization as transformation of psychiatry: processes and outcomes <i>Roberto Mezzina (Trieste, Italy)</i></p>	
11:45	<p>Lectio Magistralis <i>Chairs: Jan Berndsen (Utrecht, The Netherlands), Gianmaria Galeazzi (Modena, Italy)</i></p> <p>The Stigma Effect <i>Patrick W. Corrigan (Chicago, IL, USA)</i></p>	
12:30 -12:50	<p>Presentation of the Italian version of the FACT (Flexible Assertive Community Treatment) Manual <i>Dutch original version by J.R. (Remmers) van Veldhuizen and M. (Michiel) Bähler (2013, Groningen, The Netherlands)</i> <i>Italian version by Alessandra Martinelli and Mirella Ruggeri (Verona, Italy), Francesco Mungai and Fabrizio Starace (Modena, Italy), 2019</i></p>	
12:50	Lunch	





Friday, September 6

13:30 -15.00	Symposia Sessions	Parallel Sessions
Silos di Ponente AUDITORIUM	<p>Symposium 35 THE ROLE OF PSYCHIATRIC EPIDEMIOLOGY FOR COMMUNITY MENTAL HEALTH POLICIES <i>Chair: Fabrizio Starace (Modena, Italy)</i></p> <p>The Care Gap in Community Mental Health Services <i>Fabrizio Starace (Modena, Italy)</i></p> <p>Planning future CAMHS: lessons learnt from Children & Adolescent Psychiatric Epidemiology <i>Paolo Stagi (Modena, Italy)</i></p> <p>Using big data for evaluating the quality of mental health care in Italy <i>Antonio Lora (Lecco, Italy)</i></p> <p>Epidemiology of rights and mental health policies <i>Roberto Mezzina (Trieste, Italy), S.P. Sashidharan</i></p>	
Room SMT.01 MICHELANGELO	<p>Symposium 27 DEVELOPMENT OF COMMUNITY MENTAL HEALTH CARE DURING DEINSTITUTIONALIZATION: FROM POLICY TO PEOPLE AND BACK <i>Chair: Hans Kroon (Utrecht, The Netherlands)</i></p> <p>Policy of deinstitutionalization and care in the community in the Netherlands: a national monitoring evaluation <i>Aafje Knispel (Utrecht, The Netherlands), L. Hulsbosch, A. de Lange, H. Michon, H. Kroon</i></p> <p>Social inclusion and quality of life in people with severe mental illnesses: a panel study <i>Lex Hulsbosch (Utrecht, The Netherlands), Harry Michon, A. de Lange, A. Knispel, H. Kroon</i></p> <p>"Doing relations": a focus on the daily practice of community mental health care <i>Christien Muusse (Utrecht, The Netherlands), H. Kroon, N. Mulder, J. Pols</i></p> <p>Priorities and challenges in developing community mental health care <i>Hans Kroon (Utrecht, The Netherlands), A. Knispel, H. Michon</i></p>	
Room SMT.02 GOYA	<p>Symposium 4 YOUNG EAOE GROUP SHAPING MENTAL HEALTH COMMUNITY CARE FOR THE FUTURE ACROSS EUROPE <i>Chair: Alessandra Martinelli (Verona, Italy)</i></p> <p>Dutch community mental health care - organization and recent developments <i>Saskia de Haan (Alkmaar, The Netherlands)</i></p> <p>Changes and future visions in treatment models in Germany – the Hamburg perspective <i>Anja Christine Rohenkol (Hamburg, Germany), F. Ruppelt, M. Lambert, A. Bussopulos and IV Team</i></p> <p>The Italian community-based mental health care since deinstitutionalisation - the Verona experience <i>Alessandra Martinelli (Verona, Italy), M. Ruggeri</i></p>	
Room SMT.03 MUNCH	<p>Symposium 22 IMPLEMENTING ACT/FACT IN NORWAY THROUGH EDUCATION, NETWORKS AND MANUALS <i>Chair: Trond Hatling (Trondheim, Norway)</i></p> <p>Regional networks as tools in the implementation process <i>Sita Grepp (Bodø, Norway)</i></p> <p>A national education program for ACT/FACT teams <i>Gretha Evensen (Trondheim, Norway), K. Nysveen</i></p> <p>Development and use of a manual for establishing ACT/FACT-teams <i>Lars Håvard Bakke (Trondheim, Norway)</i></p>	



Friday, September 6

<p>Room SMT.04 LIGABUE</p>	<p>Symposium 26 FLEXIBLE ASSERTIVE COMMUNITY TREATMENT IN NORWAY. RESULTS FROM A NATIONAL RESEARCH BASED EVALUATION <i>Chair: Anne Landheim (Ottestad, Norway)</i></p> <p>The study design of the evaluation and the characteristics of the teams and the patients <i>Hanne Clausen (Ottestad, Norway), S. Odden, E. Kvam, A. Landheim</i></p> <p>Model Fidelity of Flexible Assertive Community Treatment Teams in Norway <i>Sigrun Odden (Ottestad, Norway), A. Landheim, H. Clausen, E. Kvam</i></p> <p>Results from a longitudinal observational study of patients <i>Anne Landheim (Ottestad, Norway), S. Odden, E. Kvam, H. Clausen</i></p> <p>Exploring user experiences with FACT: Results from a Norwegian interview study <i>Elisabeth Adams Kvam (Ottestad, Norway), S. Odden, H. Clausen, A. Landheim</i></p>
<p>Room SMT.05 VAN GOGH</p>	<p>Symposium 5 FIRST RESULTS ON THE EVALUATION OF CROSS-SECTORAL AND PATIENT-CENTERED TREATMENT MODELS IN GERMANY <i>Chair: Anne Neumann (Dresden, Germany)</i></p> <p>Cross-sectoral and patient-centered treatment models in Germany – background <i>Hans Joachim Salize (Mannheim, Germany)</i></p> <p>First results on effects, costs and cost-effectiveness, a health insurance data-based controlled cohort study (EVA64) <i>Anne Neumann (Dresden, Germany), F. Baum, O. Schoffer, R. Kliemt, S. March, D. Häckl, E. Swart, A. Pfennig, J. Schmitt</i></p> <p>First experience in the prospective, controlled multi-center observation study (PsychCare) <i>Bettina Soltmann (Dresden, Germany), A. Neumann, S. von Peter, S. March, D. Häckl, Y. Ignatyev, R. Kliemt, E. Swart, M. Romanos, M. Heinze, J. Schmitt, A. Pfennig</i></p> <p>What role does the cross-sectoral hospital budget play? – Results of two process and outcome evaluation studies <i>Julian Schwarz (Berlin, Germany), S. von Peter</i></p>
<p>Room SMT.06 DE CHIRICO</p>	<p>Symposium 8 TRAUMA, DOMESTIC VIOLENCE AND VICTIMIZATION IN THERAPIST-CLIENT INTERACTION <i>Chair: Astrid M. Kamperman (Rotterdam, The Netherlands)</i></p> <p>A latent class analysis of PTSD symptomatology, and it's relationship with gender and current victimization <i>Astrid M. Kamperman (Rotterdam, The Netherlands), H. Schlesinger, R. Ruijne, S. Bogaerts, C.L. Mulder</i></p> <p>Migration, trauma and recovery from psychosis: preliminary results of the UP's cohort <i>Ayuk Bakia (Rotterdam, The Netherlands), C. L. Mulder, J. P. C. J. Selten, A. I. Wierdsma, B. C. van Aken</i></p> <p>Screening and detection of domestic violence in psychiatric patients: a cluster randomized controlled study <i>Roos Ruijne (Rotterdam, The Netherlands), L.M. Howard, K. Trevillion, C. Garofalo, S. Bogaerts, C.L. Mulder, A.M. Kamperman</i></p> <p>The CRITIC study: Coping with Trauma Exposure at work in clinical and forensic psychiatry <i>A.E. Bonebakker (Rotterdam, The Netherlands), A.F.T. Bloemendaal, N. Kool, A.M. Kamperman, M. Olff, C.L. Mulder</i></p>



Friday, September 6

13:30 -15.00	Workshops Sessions	Parallel Sessions
Room SMT.07 MODIGLIANI	Workshop 4 DOING IS THE BEST WAY OF THINKING FLEXIBLE INTEGRAL APPROACH. ONE ON ONE PERSONAL COACHING <i>Harry Gras (Utrecht, The Netherlands)</i>	
Room SMT.08 GAUGUIN	Workshop 14 NOTHING ABOUT ME, WITHOUT ME, HOW DO YOU DO THIS IN PRACTICE <i>Martijn Kole (Utrecht, The Netherlands)</i>	
Room SMT.09 DALÍ	Workshop 22 NEIGHBOURHOOD-ORIENTED OFFERING OF TREATMENT AND SUPPORT <i>Machteld van Raalte (Utrecht, The Netherlands), S. Wullems</i>	
Room SMT.10 MONET	Workshop 25 MIND SOMEONE ELSE'S BUSINESS <i>Annemiek Schäfer (Heiloo, The Netherlands), S. van Houten, E. Beld</i>	
Room SMT.11 FRIDA KHALO	Master Class HONEST, OPEN, PROUD <i>Patrick W. Corrigan (Chicago, USA), L. Pingani (Modena, Italy)</i>	
15:00	<i>Open coffee during afternoon Conference works</i>	
15:00 - 16:30	Plenary Lectures	Silos di Ponente Lecture Hall
15:00	Mario Chiarini, Tenor <i>E lucevan le stelle (from Tosca by G. Puccini, 1900)</i>	
15:00	Lectio Magistralis <i>Chairs: Niels Mulder (Rotterdam, The Netherlands), Sarah Tosato (Verona, Italy)</i> Reform of youth mental health services in the UK : from early psychosis to youth mental health <i>Maximillian Birchwood (Warwick, Coventry, UK)</i>	
15:45	Lectio Magistralis <i>Chairs: Jan Berndszen (Utrecht, The Netherlands), Corrado Barbui (Verona, Italy)</i> The future of community mental health from a European perspective. Policy and practice <i>Claudia Marinetti (Brussels, Belgium)</i>	



Friday, September 6

16:30 -18.00	Symposia Sessions	Parallel Sessions
<p>Silos di Ponente AUDITORIUM</p>	<p>Symposium 33 CHALLENGING SITUATIONS IN DIAGNOSTICS AND TREATMENT <i>Chair: Martin Lambert (Hamburg, Germany)</i></p> <p>Schizophrenia and Autism-Spectrum-Disorders <i>Daniel Schöttle (Hamburg, Germany), H.Krause, T. Apitz, C. Müller</i></p> <p>Aggressive + violent behavior: Ideas how to predict and how to intervene in an outpatient setting <i>Romy Schröter (Hamburg, Germany), A.Karow, M. Lambert, D. Lüdecke</i></p> <p>Let's talk about... Calling and Texting in mental health crises <i>Daniel Lüdecke (Hamburg, Germany), R. Schröter, L. Tlach</i></p>	
<p>Room SMT.01 MICHELANGELO</p>	<p>Symposium 17 YOUTH-FRIENDLY MENTAL HEALTH & WELFARE SERVICES <i>Chair: Tor Helge Tjelta (Oslo, Norway)</i></p> <p>Youth Arena - background. A new promising collaborative model for youth between 12- 25 <i>Tor Helge Tjelta (Oslo, Norway)</i></p> <p>Youth Arena (Ung Arena) in Norway <i>Nora Mahendran Berge (Oslo, Norway), M. Sulejmanova</i></p> <p>The use and support for Youth to Youth peer support workers in Oslo <i>Torbjørn Mohn-Haugen (Oslo, Norway), M. Sulejmanova</i></p> <p>Mapping what it means to deliver Youth-friendly Welfare Services <i>Stig Hermann Nygård (Oslo, Norway), M. Pettersen, M. Sulejmanova</i></p>	
<p>Room SMT.02 GOYA</p>	<p>Symposium 28 FROM FLEXIBLE ASSERTIVE COMMUNITY TREATMENT TO COLLABORATIVE MENTAL HEALTH CARE IN THE COMMUNITY <i>Chair: Albert Van Keijzerswaard (Utrecht, The Netherlands)</i></p> <p>From FACT to Collaborative Mental Health Care in the Community; the implementation process <i>Leonieke Beverloo (Utrecht, The Netherlands)</i></p> <p>From FACT to Collaborative Mental Health Care in the Community; qualitative and process evaluation <i>Albert van Keijzerswaard (Utrecht, The Netherlands), A. Kuipers, D. van Rijswijk, W. Swildens</i></p> <p>From FACT to Collaborative Mental Health Care in the Community; patient experiences and outcomes <i>Wilma Swildens (Utrecht, The Netherlands), D. van Rijswijk, L. Beverloo, A. van Keijzerswaard, G. Schijven</i></p>	
<p>Room SMT.03 MUNCH</p>	<p>Symposium 30 UNITED WE STAND - DIVIDED WE FALL <i>Chair: Anne Landheim (Hamar, Norway)</i></p> <p>United we stand - divided we fall <i>Bård Grønstøl (Tønsberg, Norway)</i></p> <p>Results from the evaluation: How does the team work? <i>Sigrun Odden (Hamar, Norway)</i></p> <p>Results from the evaluation: patient outcomes two years after enrollment into the team <i>Anne Landheim (Hamar, Norway)</i></p> <p>An anchor in normality <i>Elisabeth Adams Kvam (Hamar, Norway)</i></p>	



Friday, September 6

Room SMT.04 LIGABUE	<p>Symposium 31 INTEGRATED MENTAL HEALTH CARE IN THE COMMUNITY: A NEW MODEL IN THE NETHERLANDS, GGZ NHN <i>Chair: Renè Keet (Heerhugowaard, The Netherlands)</i></p> <p>Focus on recovery in Integrated Mental Health Care in the Community <i>Renè Keet (Heerhugowaard, The Netherlands)</i></p> <p>Specialists together in the community (SSIW): aims of the new model <i>Ardan Miedema (Amsterdam, The Netherlands)</i></p> <p>Implementation and evaluation of SSIW <i>Sonja van Rooijen (Amsterdam, The Netherlands), M. van Dijk</i></p>	
Room SMT.05 VAN GOGH	<p>Symposium 29 COMMUNITY IN THE LEADING ROLE FOR ITS MENTAL HEALTH. WHAT NEW ROLES FOR PSYCHIATRIC SERVICES? <i>Chair: Fabrizio Starace (Modena, Italy)</i></p> <p>The contribution of community mental health services to the moral career of the mental patient <i>Lorenzo Burti (Verona, Italy)</i></p> <p>Mental health as common good. The relational paradigm <i>Ernesto Guerriero (Verona, Italy), J. Vanzini</i></p> <p>Housing: from the residential continuum to the complexity of living <i>Josè Mannu (Verona, Italy)</i></p> <p>Self-help as a relational and subsidiary community <i>Paolo Vanzini (Verona, Italy)</i></p>	
16:30 -18.00	<p>Workshops Sessions</p>	Parallel Sessions
Room SMT.06 DE CHIRICO	<p>Workshop 20 GOOD NEIGHBOURS: INCLUSION AND COMMUNITY BUILDING IN MIXED HOUSING PROJECT PLACE2BU (NL) <i>Suzan Popovic (Utrecht, The Netherlands), M. Davelaar</i></p>	
Room SMT.07 MODIGLIANI	<p>Workshop 24 THE EXPERIENCE OF PEOPLE WITH SEVERE MENTAL ILLNESS WITH CREATIVE THERAPIES <i>Francisco Rodriguez Pulido (Santa Cruz De Tenerife, Spain), N. Caballero Estebaranz, P.M. Martín Cuadrado, P. Guillén Barroso</i></p>	
Room SMT.08 GAUGUIN	<p>Workshop 1 COORDINATION OF CARE DIALOGUE <i>Koen Westen (Breda, The Netherlands), P. Peeters</i></p>	
Room SMT.09 DALI	<p>Workshop 26 AN OUTCOME EVALUATION OF ASSERTIVE COMMUNITY TREATMENT TEAM'S (ACTT) STEPPED CARE MODEL <i>Scott Pepin (Whitby, ON, Canada), F. Islam</i></p>	
Room SMT.10 MONET	<p>Workshop 27 EX-IN RELATIVES ACCOMPANIMENT - TRAINING AND EXPERIENCES IN THE WORK <i>Katharina Nagel (Hamburg, Germany)</i></p>	
18:30	End of 6 Sept. Sessions	
19:30	Social Dinner at Circolo Ufficiali in Castelvechio	



Saturday, September 7

8:30	Secretariat opening	
9:00 - 10:30	Oral Presentations Sessions	Parallel Sessions
Room SMT.01 MICHELANGELO	<p>HUMANISED CARE <i>Chair and Co-chair: Isolde M. Busch (Verona, Italy), Maria Betriu Sabaté (Barcelona, Spain)</i></p> <p>Community humanised healthcare: challenges and opportunities identified by different stakeholders <i>Isolde M. Busch (Verona, Italy), F. Moretti, G. Travaini, A.W. Wu, M. Rimondini</i></p> <p>Impact in the first year experience of home care unit on emergency service <i>Maria Betriu Sabaté (Barcelona, Spain), J.D. Barbero Valverde, A. Guàrdia Delgado, R.M. Gabernet, A. Martinez, I. Parra, J. Balaguer, J. Labad</i></p> <p>National partnership for mental health in the workplace <i>Christian Doensing Soerensen (Copenhagen, Denmark)</i></p>	
Room SMT.02 GOYA	<p>MENTAL AND PHYSICAL HEALTH <i>Chair and Co-chair: Pietro Zolli (Trieste, Italy), Christine Cauffield (Jacksonville, FL, USA)</i></p> <p>Shaping new approaches in Mental Health Services: The “Mens Sana” <i>Pietro Zolli (Trieste, Italy), R. Bracco, L. Frattini, C. Canova, M. Impagnatiello, G. Lonigro, L. Marrazzo, S. Reuther</i></p> <p>Life Participation, Social Support and Quality of Life in parents having children with Cerebral Palsy <i>Sajida Naz (Rawalpindi, Pakistan), K. Iftikhar, I. Gul</i></p> <p>Type D personality and quality of life in patients following myocardial Infarction <i>Iram Gul (Rawalpindi, Pakistan)</i></p> <p>Identifying the Neuropsychological Symptoms of Dementia <i>Christine Cauffield (Jacksonville, FL, USA)</i></p>	
Room SMT.04 LIGABUE	<p>STRATEGIES IN SEVERE MENTAL ILLNESS <i>Chair and Co-chair: Maria Mauritz, (Warnsveld/Nijmegen, The Netherlands), Federico Bertolini (Verona, Italy)</i></p> <p>Narrative Exposure Therapy for Posttraumatic Stress Disorder in Severe Mental Illness: “getting a different life” <i>Maria Mauritz, (Warnsveld/Nijmegen, The Netherlands), B.G.I. van Gaal, R.A. Jongedijk, H. Vermeulen, P.J.J. Goossens</i></p> <p>Incorporating sexuality and intimacy in the care for people with severe mental illness <i>Jose de Jager (Dokkum, The Netherlands), A. Nugter, J. van Os</i></p> <p>Autonomy in physical health among people living with severe mental illness <i>Miharu Nakanishi (Tokyo, Japan), G. Kurokawa, S. Yamasaki, A. Nishida</i></p> <p>The profile and mental health of the Dutch homeless service users: results of crosssectional research <i>Coline van Everdingen (Maastricht, The Netherlands), P. Delespaul</i></p> <p>Are we offering all options to patients? An investigation on Italian prescribing attitudes on Long-Acting Antipsychotics <i>Federico Bertolini (Verona, Italy), G. Ostuzzi, M.A. Mazzi, M. Ruggeri, C. Barbui, STAR Network Investigators</i></p>	



Saturday, September 7

<p>Room SMT.06 DE CHIRICO</p>	<p>PEER SUPPORT AND RECOVERY <i>Chair and Co-chair: Martijn Kole (Utrecht, The Netherlands), Marco Colizzi (Verona, Italy)</i></p> <p>The recovery orientated intake: including treatment and recovery in mental health care from the start <i>Marty Dijkstra (Heerhugowaard, The Netherlands), N. Waterhout</i></p> <p>A simulation-based soft skills training program for peer support specialists working on assertive outreach teams <i>Nicole Kirwan (Toronto, ON, Canada)</i></p> <p>How Non-Violent Resistance assists in reducing forced interventions on an acute psychiatric unit for adolescents <i>Elizabeth Miedema (Heerhugowaard, The Netherlands)</i></p>
<p>Room SMT.08 GAUGUIN</p>	<p>DECISION-MAKING AND SOCIAL RECOVERY <i>Chair and Co-chair: Alessandra Martinelli (Verona, Italy), G.H.M. (Marieke) Pijnenborg (Groningen, The Netherlands)</i></p> <p>Clinical, social and personal recovery in psychosis in one model! A latent mixture Markov model <i>G.H.M. (Marieke) Pijnenborg (Groningen, The Netherlands), S. Castelein, M. Timmerman, M. van der Gaag, PHAMOUS-investigators, E. Visser</i></p> <p>An Italian recovery-oriented pilot study to achieve shared decision-making rehabilitation projects <i>Alessandra Martinelli (Verona, Italy), T. Pozzan, E. Procura, D. Cristofalo, C. Bonetto, M. Ruggeri</i></p> <p>IPS and how to get partners involved and committed <i>Antoinette Ooijevaar (Heiloo, The Netherlands), J. Gijsberts</i></p> <p>The economic savings and the non-vocational impact with Individual Placement and Support Model <i>Francisco Rodriguez Pulido (Santa Cruz de Tenerife, Spain), N. Caballero Estebanz</i></p>
<p>Room SMT.09 DALÍ</p>	<p>HOME CARE AND ACT <i>Chair and Co-chair: Juan José Martínez Jambrina (Avilés/Salinas, Spain), Marianna Purgato (Verona, Italy)</i></p> <p>Families in Resource Group Assertive Community Treatment (RACT): Relatives' experiences <i>Ola Johansson (Gothenburg, Sweden), M. Ewertzon, A. Johansson, B. Weimand, Z. Mellgren, Ek-Persson, M. Waern, N. Sjöström</i></p> <p>Ethical discomforts lived within treatment and care in the community: Act and homelessness team <i>Jacques Quintin, (Sherbrooke, Québec, Canada), N. Larivière, M-C. Jacques, C. Charpentier</i></p> <p>Home Care for Hölderlin and Lenz <i>Juan José Martínez Jambrina (Avilés/Salinas, Spain)</i></p> <p>Care for a vulnerable group of people in the shades of the Dutch society <i>Paul Keppel (Hoofddorp, The Netherlands)</i></p> <p>Specialized treatment in community-based teams: the expert network for anxiety disorders <i>Maurice Topper (Amsterdam, The Netherlands), F. Slagter</i></p>



Saturday, September 7

<p>Room SMT.10 MONET</p>	<p>STIGMA AND USERS' PERCEPTION <i>Chair and Co-chair: Antonio Lasalvia (Verona, Italy), Bert van de Velde (Haarlem, The Netherlands)</i></p> <p>Anti-stigma certification. Development of user-generated questionnaire to evaluate provider-based stigma in mental health settings <i>Antonio Lasalvia (Verona, Italy), S. Pillan, T. Pozzan, D. Confente, D. Cristofalo, C. Bonetto, M. Ruggeri</i></p> <p>Do clinicians predict patients' readmission better than a statistical model? An exploratory study on clinical risk assessment in mental health <i>Sofia Zanovello (Verona, Italy), V. Donisi, F. Tedeschi, M. Ruggeri, F. Moretti, M. Rimondini, F. Amaddeo</i></p> <p>Yeke yo (it's not difficult), an alternative approach to a complex issue of collaboration between organizations in the domain of (emergency) mental healthcare in the Netherlands <i>Bert van de Velde (Haarlem, The Netherlands), B. Bijnsdorp</i></p> <p>Renaming schizophrenia? A survey among Italian psychiatrists, service users and family members <i>Antonio Lasalvia (Verona, Italy), A. Vita, A. Bellomo, M. Tusconi, C. Bonetto, G. Favaretto, E. Zanalda, C. Mencacci, B. Carpiello</i></p>	
<p>Room SMT.11 FRIDA KHALO</p>	<p>APPLICATIONS OF E-HEALTH INTERVENTIONS/DIGITAL HEALTH – 2 <i>Chair and Co-chair: Monica Eikema (Rosmalen, The Netherlands), Lidia Del Piccolo (Verona, Italy)</i></p> <p>User experience of bipolar patients; measuring lithium with a mobile device <i>Monica Eikema (Rosmalen, The Netherlands), M. Reijnen, I.M.B. Bongers</i></p> <p>Outreaching psychological training using information communication technology <i>Najma Najam (Lahore, Pakistan), A. Hasmi, N. Luqman</i></p> <p>Virtual psychiatry ward – video conferencing in the treatment of psychosis, <i>Asko Wegelius (Helsinki, Finland), T. Tökönen, V. Eerola, B. Karpov, M. Chiramberro, M. Holli, T. Kieseppä</i></p> <p>Supporting Community Mental Health Care by digital communication strategy – content, channels and evaluation <i>Ragnhild Krogvig Karlsen (Trondheim, Norway), R. Lund Fleiner, A. Kristiansen Rønning</i></p> <p>Understanding mental wellbeing in the oldest old: a European study using an Exploratory Structural Equation Model approach <i>Federico Tedeschi (Verona, Italy), V. Donisi, J. L. Gonzalez-Caballero, J. Cresswell-Smith, E. Lara, M. Miret, A. K. Forsman, K. Wahlbeck, F. Amaddeo, J. Kalseth</i></p>	
<p>10:30</p>	<p>Coffee break</p>	
<p>11:00 - 13.30</p>	<p>Plenary Lectures</p>	<p>Silos di Ponente Lecture Hall</p>
<p>11:00</p>	<p>Mario Chiarini, Tenor <i>Libiamo ne' lieti calici (from La Traviata by G. Verdi, 1853)</i></p> <hr/> <p>Lectio Magistralis <i>Chairs: Marijke van Putten (Leiden, The Netherlands), Francesco Amaddeo (Verona, Italy)</i></p> <p>The PsyData project; building a learning health system in Psychiatry based on applied data analytics <i>Floortje E. Scheepers (Utrecht, The Netherlands)</i></p>	
<p>11:45</p>	<p>Lectio Magistralis <i>Chairs: Margret Overdijk (Amsterdam, The Netherlands), Lidia del Piccolo (Verona, Italy)</i></p> <p>Outpatient mental health care in the 21st century: a public health perspective <i>Ronny Bruffaerts (Leuven, Belgium; Ann Arbor, MI, USA)</i></p>	
<p>12:30</p>	<p>Closing Ceremony and presentation of the 6th EAOE Conference <i>Niels Mulder (Rotterdam, The Netherlands), Mirella Ruggeri (Verona, Italy)</i></p>	
<p>13:30</p>	<p>Farewell Party at Santa Marta University Building with served food and drinks</p>	





Poster Session

Posters displayed from Thursday, 5 in the afternoon to Friday, 6 | Evaluation Session: Friday, September 6 from 13:00 to 14:00

TOPIC 1 · DEINSTITUTIONALIZATION

1.4 Innovative practices in housing services

- P11** **FIRST YEAR EXPERIENCE OF THE IMPLEMENTATION OF THE HOME CARE SERVICE FOR ACUTE MENTAL ILLNESS**
Armand Guàrdia Delgado, J.D. Barbero, M. Betriu, E. Izquierdo, E. De la Cruz, V. Agasi, S. Mulero, I. Merodio

TOPIC 2 · OUTPATIENT CARE

2.1 Treatment and care in the community: FACT, ACT, CMHT, other models

- P4** **SELF-REPORTED QUALITY OF LIFE OF PATIENTS WITHIN ASSERTIVE COMMUNITY TREATMENT (ACT) FORENSIC CARE**
G. Jansen, E. Kaethoven, I.L. Bongers
- P10** **STAFF SELF-PERCEPTION ON MANAGING USERS' REFERRALS IN THE CMHC IN TRIESTE: AN INTERVIEWS-BASED RESEARCH**
Tommaso Bonavigo, Sara Bertoni, Duccio Papanti, Federico Sandri
- P15** **A COMMUNITY MENTAL HEALTH TEAM IN A HEALTH CENTER, - WORKING TOGETHER**
Ana Vieira Araujo, Maria Lurdes Ribeiro, Antonio Correia, Jose Machadeiro, Lisete Lourenço

2.3 Dealing with complexity: co-morbidity, intellectual disability, somatic diseases, addiction

- P6** **MULTIPLE SCLEROSIS AND PSYCHOSIS. UNCOMMON BUT COMPLEX CO-MORBIDITY FOR COMMUNITY MEDICINE**
Antonino Riolo, Giorgio Lo Nigro
- P2** **SHORT-TERM GROUP SCHEMA THERAPY (SCBT-G) FOR PEOPLE WITH PSYCHOTIC DISORDERS AND COMORBID PERSONALITY PROBLEMS**
Ellen M.A. Horsselenberg, H. Wolters, J.M. Brink, Dr. E. Sportel
- P12** **FACILITATING AND OBSTRUCTING FACTORS OF PSYCHO-EDUCATION FOR IMPROVING COPING BEHAVIOR BY PATIENTS WITH A DUAL-DISORDER**
Carol van den Broek, Koos de Haan
- P28** **SHAPING NEW APPROACHES IN MENTAL HEALTH SERVICES: THE "MENS SANA"**
Pietro Zolli, R. Bracco, L. Frattini, C. Canova

2.4 Specialty services versus general services

- P8** **A RANDOMIZED CONTROLLED TRIAL OF COMPREHENSIVE EARLY INTERVENTION CARE IN PATIENTS WITH FIRST-EPIISODE PSYCHOSIS**
Syudo Yamasaki, Atsushi Nishida, Shuntaro Ando, Shinsuke Koike, Jo Smith, Paul French, Kiyoto Kasai, Yuji Okazaki

2.7 Innovative psychological and biological treatments

- P22** **DEVELOPMENT OF AN INDIGENOUS HEADACHE PAIN ASSESSMENT AND PROTOCOLS**
Shahida Tanvir, Najma Najam
- P26** **IMPACT OF MINDFULNESS MEDITATION ON PSYCHIATRIC SERVICES UTILIZATION IN A MENTAL HEALTH SERVICE**
A. Rossi, F. Tedeschi, F., Salazzari D., E. Saugo, A. Park, F. Amaddeo



Poster Sessions

Posters displayed from Thursday, 5 in the afternoon to Friday, 6 | Evaluation Session: Friday, September 6 from 13:00 to 14:00

P27 THE IMPACT OF COGNITIVE REMEDIATION IN MAJOR PSYCHOSES: PRELIMINARY FINDINGS
 Maria Gloria Rossetti, Niccolò Zovetti, Cinzia Perlini, Elisabetta Caletti, Adele Ferro, Paolo Brambilla, Marcella Bellani

TOPIC 3 - RECOVERY

3.5 Patients in the lead: shared decision making

P25 THE NEWBORN USERS' ASSOCIATION "IL CERCHIO APERTO" (THE OPEN CIRCLE): A CO-PRODUCTION EXPERIENCE
 Alessandra Martinelli, Stefano Pillan, Francesco Cambiano, Maria Paola Martinelli, Susanna Brunelli, Andrea Di Francesco, Francesco Bonzagni, Paolo Zuccari, Lorenzo Beghini, Simone Nicolini, Daniela Confente, Tecla Pozzan, Mirella Ruggeri

3.6 Involving significant others in treatment

P24 EXPLORING ADDICTION RECOVERY: FOCUS GROUPS WITH INDIVIDUALS IN RECOVERY AND FAMILY MEMBERS
 Anne Dekkers, Wouter Vanderplasschen

TOPIC 4 - DIGITAL PSYCHIATRY

4.1 Internet based interventions

P3 COMPLEXITY-MAPPING IN DIGITALIZATION PROJECTS: REVEALING THE CHALLENGES OF DEVELOPING A SCHIZOPHRENIA POINT-OF-CARE DASHBOARD
 Andreas Gremyr, Ann-Christine Andersson

P13 'USER EXPERIENCE OF BIPOLAR PATIENTS; MEASURING LITHIUM WITH A MOBILE DEVICE'
 M. Eikema, M. Reijnen, I.M.B. Bongers

4.2 Telemental health

P20 VIRTUAL PSYCHIATRY WARD – VIDEO CONFERENCING IN THE TREATMENT OF PSYCHOSIS
 Asko Wegelius, Tuomo Töhönen, Virpi Eerola, Boris Karpov, Marcelo Chiramberro, Matti Holí, Tuula Kiesepää

4.4 Virtual reality

P5 COULD PHYSIOLOGICAL BIOFEEDBACK AND VIRTUAL REALITY SUPPORT PATIENTS WITH A GENERALIZED ANXIETY DISORDER TO RELAX?
 Eva van Nunen, L.J.A.E. Snaphaan

TOPIC 5 - CHILD & ADOLESCENT PSYCHIATRY IN COMMUNITY CARE

5.2 C&A services in the community, outreach, working with schools

P18 A STUDY OF RESILIENCE AMONG UNIVERSITY STUDENTS AT THE CAMPUS IN THE SOUTH THAILAND INSURGENCY
 Chonnakarn Jatchavala, Arnont Vittayanont

P29 CHILDHOOD ABUSE AND NEGLECT PREDICT DIFFERENT SYMPTOM PROFILES IN FIRST-EPIISODE PSYCHOSIS
 K. De Santi, R. Ritunnano, M. Birchwood, A. Thompson, R. Upthegrove, C. Bonetto, D. Cristofalo, A. Fioritti, F. Mazzi, M. Pavanati, K. Furlato, A. Preti, A. Lasalvia, C. Faravelli, G. Fioravanti, S. Tosato, S. Tomassi, M. Ruggeri & The GET UP Group



Poster Sessions

Posters displayed from Thursday, 5 in the afternoon to Friday, 6 | Evaluation Session: Friday, September 6 from 13:00 to 14:00

P30 AN EARLY INTERVENTION FOR HIGH SCHOOL STUDENTS FROM VERONA, AIMED TO PREVENT MENTAL HEALTH STIGMA, STIMULATE PROBLEM-SOLVING SKILLS, AND HELP IDENTIFYING AND MANAGING EMOTIONS

Caterina Diani, Marco Colizzi, Rosa Dall'Agnola, Vanda Orlandi, Katia De Santi, Tecla Pozzan, Antonio Lasalvia, Chiara Bonetto, Doriana Cristofalo, Chiara Bovo, Mirella Ruggeri

TOPIC 6 · Community care evaluation

6.1 Quality assessment

P19 DOES THE DEINSTITUTIONALIZATION MODEL OF TRIESTE APPLIED TO SECURITY MEASURES IMPROVE SOCIAL REINCLUSION OUTCOMES?

Alessandro Norbedo, Claudia Fantuzzi, Roberta Accardo, Daniela Babich, Cristina Brandolin, Paola Ceppi, Gabriella D'Ambrosi, Giorgio Lo Nigro, Roberto Mezzina

TOPIC 7 · Prevention

7.2 Prevention of severe mental illness / chronicity

P14 ASSESSMENT OF THE EFFECTS OF GROUP TREATMENT IN AGGRESSIVE OUTPATIENTS.

Romy Schröter, Martin Lambert, Anne Karow, Daniel Lüdecke

TOPIC 8 · Integrated care and Collaboration between mental health and other services

8.4 Collaboration with the informal network

P16 A COMMUNITY MENTAL HEALTH TEAM AND THE DISASTER OF PEDROGÃO GRANDE

Araujo Ana Vieira, Ribeiro Lurdes, Correia Antonio, Machadeiro José, Lourenço Lisete

8.6 Working with migrant populations

P17 A SYSTEMATIC REVIEW OF SUBSTANCE USE RECOVERY RESEARCH AMONG MIGRANTS AND ETHNIC MINORITIES

Aline Pouille, Charlotte De Kock, Wouter Vanderplasschen, Tom Decorte, Freya Vander Laenen



Plenary Lectures | Thursday, September 5

OPENING LECTURE • h. 10:45

10 GOOD REASONS TO BE OPTIMISTIC ABOUT THE FUTURE OF COMMUNITY MENTAL HEALTH CARE AND 5 TO STAY ALERT



Prof. Mirella Ruggeri

Professor of Psychiatry; Director, Institute of Psychiatry, University of Verona and Verona Hospital Trust; Director, Specialization School in Psychiatry, University of Verona, Italy

Forty years ago the Italian Psychiatric Reform prescribed by law the closure of large mental hospitals. A nation-wide network of Departments of Mental Health (DMH) has been developed and now delivers routinely outpatient and inpatient care, and runs semi-residential and residential facilities. Intensive effort has been promoted: inpatient care is provided all over Italy by General Hospital Psychiatric Units (GHPUs) with a maximum of 15 beds, and only a very low proportion of inpatient admissions are compulsory. Community Mental Health Centres in most Regions offering daytime and domiciliary care for those with severe and enduring mental illness; other community mental health services include residential facilities for long-term psychiatric care and day hospital centres. This development has set a standard for many countries in the world and enormous progresses have been done in the provision of mental health care in the community. Several accomplishments allow to be optimistic on the future of mental health care: 1) data on the effectiveness of treatments have been gathered; 2) methods to measure complex aspects of care have been developed; 3) a sustained effort in favouring deinstitutionalization has been implemented, even if this is far to be completed in Europe and in the rest of the world.

Furthermore, increased attention is being given to: 4) the effects of stigma and to the initiatives aimed to reduce it; 5) the comorbidity of mental and physical disorders, previously scotomized; 6) care that includes a whole life approach; 7) universal and selective prevention to favour better mental health; 8) interdisciplinary connections; 9) transition from child to adult mental health care; 10) continuous capacity building for adult mental health staff.

Still, the community care model is demanding and requires continuous maintenance and to be alert about a series of risks such as: 1) an increasing burn out of the professionals; 2) residential facilities that might become the new places for institutionalization; 3) service accessibility and availability that remain unevenly distributed; 4) the increasing burden due to social stressors that make it difficult to disentangle the role of mental health care vs. antisocial behaviours and organic disorders due to aging; 5) an unclear vision on the proper balance between «generalist» and «specialized» mental health care services.

LECTIO MAGISTRALIS • h. 11:30

USING IMPLEMENTATION SCIENCE AND A LEARNING HEALTH CARE SYSTEM FRAMEWORK TO IMPROVE THE QUALITY OF CARE



Prof. Lisa Beth Dixon

MD, MPH, Edna L. Edison Professor of Psychiatry, New York State Psychiatric Institute, Columbia University Vagelos College of Physicians and Surgeons and NewYork-Presbyterian; Director, Division of Behavioral Health Services and Policy Research & Center for Practice Innovations; New York, USA

This lecture will use global case examples of successful efforts to improve the quality of care in community mental health. These will illustrate how to apply implementation science frameworks that include attention to characteristics of the intervention and individuals involved, the inner and outer settings, and implementation processes to achieve progress. Stakeholder input and ongoing measurement and use of data are essential.

This Lectio Magistralis will be integrated by the Master Class: “Training and technical assistance to promote evidence-based practices” that will take place on Thursday at 14.00 (Room SMT.11 Frida Khalo)

This workshop will provide detailed case studies in how the Center for Practice Innovations, an intermediary organization devoted to supporting the delivery of evidence based practices across New York State, structures its activities within an implementation science framework. Considerations will include so called “inner” and “outer” setting targets, and preimplementation, implementation, and post-implementation activities. Methods include inperson and online synchronous and asynchronous activities. The workshop will discuss strengths and weaknesses of different methods and how to build an approach given system limitations.



LECTIO MAGISTRALIS • h. 12:15

INTEGRATED CARE IN ADOLESCENTS WITH MENTAL DISORDERS AND THE ROLE OF TRANSITION PSYCHIATRY



Prof. Anne Karow

Zentrum für Psychosoziale Medizin, Klinik und Poliklinik für Psychiatrie und Psychotherapie, Klinik für Kinder- und Jugendpsychiatrie, -psychotherapie und – psychosomatik, Hamburg, Deutschland

For any person's mental development, adolescence is a crucial phase of life. Most mental disorders occur for the first time during the period between 15 and 25 years of age. Different stressors had been identified which further increase the risk for severe mental disorders and their persistence into adulthood. In addition, adolescents who develop early and severe mental disorders often do not reach the developmental steps and milestones of healthy peers.

Moreover, the age group between 16-18 years shows not only a high incidence and prevalence of mental disorders, but also the lowest treatment rate. A successful treatment in these biographically important years positively impact the long term prognosis and may sustainably prevent chronicity. Different concepts of psychiatric transition care have been developed and investigated. Most include interdisciplinary treatment concepts with family therapy, social work and group therapies to encourage the individual development, inclusion of the social environment and peer group interaction. The improvement of community-based outpatient models with an interdisciplinary transition focus on early detection and intervention in combination with hospital-replacing crisis teams as well as accessible openhousing are further important features in transition psychiatric care.

Plenary Lectures | Friday, September 6

LECTIO MAGISTRALIS • h. 11:00

DEINSTITUTIONALIZATION AS TRANSFORMATION OF PSYCHIATRY: PROCESSES AND OUTCOMES



Dr. Roberto Mezzina

Director, DSM Trieste / WHOCC for research and training

The concept of deinstitutionalization has been widely misunderstood, but it regards not just the closure of total institutions as asylums, but a whole system change and moreover a full transformation of psychiatry towards mental health. This encompassed the interpretation of the illness concealing human experience of a person. Deinstitutionalization can be seen as the main strategy to overturn oppression, to mobilize resources for recovery and social integration, creating services and supports in the community. Community-based services promoted the response to needs and the fulfillment of citizenship rights by catalyzing those resources and opportunities. The experience of Trieste, begun in 1971, represents the “practically true” invoked by Basaglia: for 40 years asylum-free, it became a demonstration that is possible to act in a new way to foster subjectivity, empowerment, recovery and social inclusion while embracing a human rights approach (e.g. principles of open door, no restraint, hospitality, negotiation). Recently the WHOCC of Trieste issued recommendations based on the most important experiences of deinstitutionalization, with all different levels of the process of transformation taken into consideration. It involved breaking roles and rules, creating reciprocity and shifting power toward a real encounter, a recognition of the contractual power of the user. The legal level, based on 1978 Legislation, was a result for the Italian experience, and it acknowledged the issue of rights as the key tool in mental healthcare. Human rights legislation in mental health now encompasses coercion, selfdetermination, and the fulfillment of fundamental freedoms. Moreover, it was an expression of a social movement for expanding civil and social rights. Today a whole life – whole systems approach provides a new framework that is comprehensive and value-based, not only for individuals but also for communities.

LECTIO MAGISTRALIS • h. 11:45

THE STIGMA EFFECT



Prof. Patrick W. Corrigan

Distinguished Professor of Psychology, Principal Investigator and Director, Chicago Health Disparities Center, National Consortium on Stigma and Empowerment, Illinois Institute of Technology, Chicago, USA

The Stigma Effect describes a conundrum where good intentioned behavioral approaches to a social problem actually lead to worse effects. Research on stigma change may find itself at this point. Advocates have developed and implemented multiple approaches to



changing stigma; might some of these be shown to have more beneficial impact than others? This presentation examines both the benefits and the negative unintended consequences of stigma change programs, considering the effects of education versus contact on the stigma of mental illness.

1. Identify the structures and types of stigma as they relate to the target in order to assess the damaging effects on the individual and the group; 2. Compare the processes of enforcing stigma change and demonstrate the effectiveness of each technique; 3. Describe the curriculum of the Honest Open Proud program and identify its aim to combat the self-stigma associated with mental illness.

This *Lectio Magistralis* will be integrated by the **Master Class: “Honest, Open, Proud”** that will take place on Friday at 14.00 (Room SMT.11 Frida Khalo)

Self-stigma is one of the egregious impacts of mental illness stigma, a diminished sense of self-esteem and self-efficacy leading to a “why try” effect in many people: “why try to get a regular job, someone like me doesn’t deserve it.” Recently, innovative programs have emerged to challenge self-stigma, programs based in part on psychoeducation and cognitive reframing skills meant to challenge stigmatizing self-statements. An interesting result has emerged out of research by our group that informs an alternative program for dealing with self-stigma: the Honest Open Proud program (HOP). Research shows those who have disclosed aspects of their mental illness frequently report a sense of personal empowerment that enhances self-esteem and promotes confidence to seek and achieve individual goals. In this light, a group of people with lived experience and stigma researchers developed the Honest, Open, Proud program now being used in beta research in the United States, Europe, Australia, and China.

We propose an interactive workshop for the conference: a chance for participants to learn about and experience the HOP and a chance for presenters to gain further perspective on strengths and limitations of the beta version. The workshop will begin with a very brief summary of the research on self-stigma and disclosure. The main of the workshop will be a review of the three lessons of the HOP: 1. Considering the pros and cons of disclosing; 2. There are different ways to disclose; and 3. Telling your story. HOP currently includes a 100 page manual and 35 page workbook with exercises and worksheets meant to engage participants. E-copies of the manual and workbook will be available to workshop participants. In addition, evaluation instruments to assess outcomes of participating in the HOP will be reviewed and provided to workshop participants.

LECTIO MAGISTRALIS • h. 15:00

REFORM OF YOUTH MENTAL HEALTH SERVICES IN THE UK: FROM EARLY PSYCHOSIS TO YOUTH MENTAL HEALTH

Prof. Maximillian Birchwood

Professor of Youth Mental Health at the University of Warwick Medical School, Coventry, UK



Objectives: 1. To share the story of how early intervention in psychosis services (EIS) moved from a pioneering service in 1995 to national funding and roll-out across the UK; 2. To learn how this has inspired reform of broader youth mental health services into early intervention 0-25yrs models replacing CAMHS, now targeted in the UK NHS plan for mental health service reform.

There are now over 200 early intervention in psychosis teams in the UK, supported by NICE guidelines and with statutory force concerning minimum waiting times to access these following the first episode of psychosis. I will briefly describe the scientific and political journey that led to this outcome and how this has inspired further reform of mental health services for young people in the shape of integrated 0-25yrs services, combining CAMHS and young adult services. I will describe the progenitor 0-25 service in Birmingham, our evaluation and its impact on national policy.

LECTIO MAGISTRALIS • h. 15:45

THE FUTURE OF COMMUNITY MENTAL HEALTH FROM A EUROPEAN PERSPECTIVE. POLICY AND PRACTICE

Dr. Claudia Marinetti

PhD, Director, Mental Health Europe, Brussels, Belgium



In a recent report entitled “Mapping and Understanding Exclusion - Institutional, coercive and community based services and practices across Europe”, Mental Health Europe looks at the state of mental health services across Europe (35+ countries). The report provides exclusive data and testimonies about European mental health systems, ongoing human rights violations and the changes on the horizon. A unique feature of the report is the inclusion of the voices of people who have experienced institutionalisation and coercion in mental health services, providing an understanding of the exclusion these individuals face in society. The report shows that while the situation has changed somewhat over the past years, there is still a substantial number of people with mental health problems living in institutions across Europe and in need of community-based services. Despite reforms, several barriers persist such as the poor cooperation between social and health authorities, lack of human rights compliant community-based services, trans-



institutionalisation and austerity. Throughout this presentation, an overview of some main findings of the report will be presented, as well as recommendations for national and European stakeholders.

Plenary Lectures | Saturday, September 7

LECTIO MAGISTRALIS • h. 11:00

THE PSYDATA PROJECT; BUILDING A LEARNING HEALTH SYSTEM IN PSYCHIATRY BASED ON APPLIED DATA ANALYTICS

Prof. Floortje E. Scheepers

MD, PhD, Psychiatrist, Head of the Department of Psychiatry, University Medical Center, Utrecht, The Netherlands



Psychiatric disorders are complex in aetiology, dynamic over time and to a large extent influenced by the interaction between the individual patient and its environment. Big data statistics can partly deal with this complexity by using real life data in real time from a clinical population. As such, big data provides opportunities to create risk profiles and improve mental health care for patients at an individual level. The PsyData project at the UMC Utrecht focuses on the stimulation of a data-driven organization in mental health care. By building flexible decision support systems, based on clinical data from the electronic patient file, professionals and patients have direct insight in daily practice and can make a profit out of it. However, to be able to replicate and validate algorithms, findings and applications it is important to increase the amount of data used. Due to privacy issues it is difficult to combine patient data from different organizations or hospitals. To circumvent this problem a computevisits- data model was built. Algorithms, output and software can be exchanged in this model whereas data stay in the original hub. In this presentation it will be shown why and how the PsyData project was implemented and how clinical practice and care networks can benefit from it.

LECTIO MAGISTRALIS • h. 11:45

OUTPATIENT MENTAL HEALTH CARE IN THE 21ST CENTURY: A PUBLIC HEALTH PERSPECTIVE

Prof. dr. Ronny Bruffaerts

Center for Public Health Psychiatry; Universitair Psychiatrisch Centrum, KU Leuven (Leuven, Belgium),
Institute for Social Research, University of Michigan (Ann Arbor, MI, USA)



Both the organization and the effective service provision of mental health care in Belgium has changed dramatically the past decade. In a country that carries a historical legacy of a high number of psychiatric beds, long stays, and inpatient driven treatment policies, a vast deinstitutionalizing process demands continuous efforts to implement and evaluate novel approaches for both inpatient and outpatient treatment facilities. Using a public health perspective, we will discuss the rationale for deinstitutionalization the mental health system in Belgium, its mechanisms, challenges, and scientific evaluation, with specific attention to the role of outpatient treatment in the reforms.



Participant Information

CONFERENCE VENUE

Polo Universitario Santa Marta - University of Verona
Via Cantarane, 24 - 37129 Verona (Italy)

ORGANIZING SECRETARIAT

COGEST M. & C.

Vicolo San Silvestro 6, 37122 Verona (Italy)
Ph: +39 045 597940 · Fax: +39 045 597265
Email: cogest@cogest.info · www.cogest.info

REGISTRATION FEES ON-SITE (VAT included)

Registration fees are expressed in EURO.

Category	Fee
Regular fee	425,00
SIP – SIEP – PSIVE Members	385,00
Social Dinner tickets	50,00

Registration includes: Conference participation including access to the whole EAOF Conference 2019, Conference material, coffee breaks, lunches as indicated in the Conference Program.

OFFICIAL LANGUAGE

English

SECRETARIAT DESK

The Secretariat Desk at the Conference venue will be open:

Thursday, September 5 from to 8:45 to 19:00
Friday, September 6 from to 8:30 to 18:00
Saturday, September 7 from to 8:30 to 13:30

ACCREDITATION

The Conference has been accredited by the European Accreditation Council for Continuing Medical Education (EACCME®) with **15 EUROPEAN CME CREDITS** (ECMEC®s).

Each medical specialist should claim only those hours of credit that he/she actually spent in the educational activity.

Through an agreement between the Union Européenne des Médecins Spécialistes and the American Medical Association, physicians may convert EACCME® credits to an equivalent number of AMA PRA Category 1 Credits™. Information on the process to convert EACCME® credit to AMA credit can be found at: www.ama-assn.org/education/earn-credit-participation-international-activities.

Live educational activities, occurring outside of Canada, recognised by the UEMS-EACCME® for ECMEC®s are deemed to be Accredited Group Learning Activities (Section 1) as defined by the Maintenance of Certification Program of the Royal College of Physicians and Surgeons of Canada.

Each participant can only receive the number of credits he/she is entitled to according to his/her actual participation at the event once he/she has completed the feedback form. In order to help you issue individual certificates to each participants, please find below the breakdown of ECMEC®s per day:

05.09.2019 - 6.00

06.09.2019 - 6.00

07.09.2019 - 3.00

The EACCME® awards ECMEC®s on the basis of 1 ECMEC® for one hour of CME with a maximum of 8 ECMEC®s per day.

The target audience consists of **medical doctors, psychiatrists, psychologists, nurses, psychiatry residents and psychologists**. In order to have training hours recognised, the barcode on the electronic badge must be read - for which the individual participant is responsible - by the electronic readers at the entrance and exit to the Conference venue.

For Dutch participants accreditation is granted by:

- Accreditatiebureau Verpleegkundig Specialisten Register
ID-number: 365628
Number of points awarded: 17
- Accreditatiebureau Kwaliteitsregister V&V en Register Zorgprofessionals
ID-number: 365628
Number of points awarded: 17
- Accreditatiebureau - FGzPt
ID-number: 365628
Number of points awarded: 21
- Accreditatiebureau Nederlandse Vereniging voor Psychiatrie
ID-number: 365628
Number of points awarded: 15

TECHNICAL HELP & MEDIA CHECK

A technician will help to transfer your presentation into the computer in each room. After completing the transfer, the technician performs a quick run of the presentation, so the speaker can check whether the presentation runs correctly, and all parts of the presentation are copied. The use of a personal laptop for presentations is not allowed. Please remember to bring your presentation on a CD/USB memory stick.

GUIDELINES FOR SYMPOSIA AND ORAL PRESENTATIONS SPEAKERS

Symposium Sessions are 90 minutes long (4 or 5 presentations for each Symposium). Every presenter has **approximately 15 minutes for presentation plus 2-3 minutes for discussion.**

Oral Presentations Sessions are 90 minutes long (4 or 5 presentations for each Topic). Every presenter has **approximately 15 minutes for presentation plus 2-3 minutes for discussion.**

The supported software for presentation is PowerPoint.

Save the slides and videos used in your presentation on your CD/USB memory stick.

GUIDELINES FOR POSTERS

POSTERS DISPLAYED FROM THURSDAY, SEPTEMBER 5 IN THE AFTERNOON TO FRIDAY, SEPTEMBER 6

Size: posters must be max 120 cm in height by 90 cm in width. The Organizing Secretariat will provide you with the necessary



Participant Information

material to hang your poster.

You can hang your poster on Thursday, September 5 from 10:00 and you will have to remove it on Saturday, September 7.

Poster Session: Friday, September 6th from 13.00 to 14.00

The poster should remain in place for the entire time of the scheduled poster session.

We kindly ask you to remove and discard your poster if you do not want to keep it. If a poster is not removed at the end of the poster period, the staff will assume that the presenter wants the poster material discarded.

WiFi

The free city network (freewifi@verona) is available at the Conference venue. WiFi passwords for the University network are also available at the registration desk.

PROGRAM CHANGES

The organizers cannot assume liability for any changes in the program due to external or unforeseen circumstances.

WARNINGS

All Participants should kindly remember that during the Conference photographs will be taken and videos recorded for subsequent publication on the websites; participation at the event is considered as automatically consenting to the use of images.

EMERGENCY NUMBERS

Health emergencies 118

Carabinieri (Italian military police) 112

Police 113

Fire brigade 115

Secretariat phone number during Conference days:

0039 329 4610295

PUBLIC TRANSPORT

Azienda Trasporti Veronesi (ATV) runs urban public transport. Tickets, valid within 90 minutes from the validation, can be bought at tobacconists for € 1,30 or € 2,00 if bought on board. Daily ticket: € 4,00 valid 24 hours long on all urban routes.

To reach the Conference venue you can catch either bus 11, 12, 13, 30, 51, 52. Get off at Via XX Settembre, get to its end, turn right into Via Arduino and then right to Via Cantarane.

TAXI

Radiotaxi switchboard (24 hours a day - 7 days a week)

0039 045 532 666

Taxi stand Piazza Bra 0039 045 803 0565

Taxi stand Porta Nuova Station 0039 045 800 4528

ARENA OPERA TICKETS

The Arena of Verona Foundation and the Municipal District of Verona accepted our request to give to all Participants to the EAOF 2019 Conference the opportunity to buy the Arena Opera Tickets at special prices agreed upon with the University of Verona.



This special offer is valid for the following dates and Operas:

CARMEN Wednesday, September 4

LA TRAVIATA Thursday, September 5

TOSCA Friday, September 6

The prices are the following:

- € 10,00 for Unnumbered positions in which the seats are the stone steps (sectors C,D,E,F)
 - € 35,00 for Numbered seat on the steps (3rd sector)
 - € 45,00 for Numbered seat on the steps (2nd sector)
- To benefit from this special offer, you should:
- buy the tickets to the Ticket Office - Via Dietro Anfiteatro 6/b - Verona (nearby the Arena theatre, in the heart of Verona city centre) Tel. 0039 045596517 - Ticket Office timetable: during Opera days: 10.00 - 21.00, other days: 10.00 - 17.45
 - show the Conference badge given at the Registration Desk, making reference to the special prices agreed upon with the University of Verona (please note: each badge = 1 ticket).

The complete calendar, timetable of the Arena Operas, maps and all useful information are available on the website <https://www.arena.it/arena/en>

For useful and touristic information please check the **Verona Pocket Guide** on Conference website www.eaof2019-futurementalhealth.com/docs/verona-pocket-guide.pdf



Social Events

SANTA MARTA UNIVERSITY BUILDING - Via Cantarane, 24

The University Site of Santa Marta is located in a huge complex of military architecture, originally used for the production and storage of bread, grain and other troop rations.

A permanent exhibition in the former bakery covers the history of the building and its relations with the city, with the further dimension of how soldiers were fed.

During the Conference, dance and music performance by:

“EIDOS DANZA” DANCE SCHOOL

The “Eidos Danza” dance school has been in Verona since 1987, with the artistic direction of Georgia Sgreva. The goal of the school is to share the love for dancing to its students, not only through regular classic, hip hop and jazz lessons, but also by taking part to many musical, theatrical and for charity events.

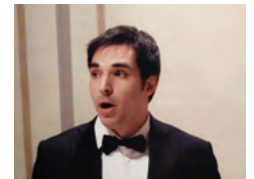
Since its foundation, the “Eidos Danza” dance school participate with pride and satisfaction in events focused on the awareness towards important social themes.

They will perform an adapted version of a coreography created in 2016 sponsored by the municipality of Verona in the occasion of the celebration of the World Day for Awareness on Eating Disorders.



MARIO CHIARINI

Mario Chiarini, tenor, was born in Verona in 1980, son of art, also his father was a tenor, a pupil of Mario Del Monaco. He graduated in lyric singing at the Conservatory of Mantua and has performed in numerous opera concerts. In addition to his activity as a opera singer he also combines that of choir director. He also graduated in Educational Sciences at the University of Verona.



• WELCOME COCKTAIL | Thursday, September 5, 2019 | h. 19:00

During the Welcome Cocktail, music performance by:



Sofia Cappelletti was born in Verona in 1994. She starts the study of violin at the age of 13 but in 2013 she undertakes the study of viola at the Conservatory of Verona where she is about to graduate. At the same time, she attends the University of Verona where, in 2017, she gets with full marks and honors her bachelor's degree in Languages and Cultures for Tourism and International Commerce. She is currently enrolled at the master's degree in Languages for Communication in Tourism and Commerce at the University of Verona.

Clara Cappelletti was born in Verona in 2000. She starts the study of flute at the age of 11 and she is currently enrolled at the Conservatory of Verona. In 2019 she gets her high school diploma at Liceo Scientifico "Galileo Galilei" in Verona.

• FAREWELL PARTY | Saturday, September 7, 2019 | h. 13:30

CIRCOLO UFFICIALI IN CASTELVECCHIO - Corso Castelvechio, 4

Castelvechio (Italian: "Old Castle") is a castle in Verona city center. It is the most important military construction of the Scaliger dynasty that ruled the city in the Middle Ages. The castle is powerful and compact in its size with very little decoration - one square compound built in red bricks, one of the most prominent examples of Gothic architecture of the age, with imposing M-shaped merlons running along the castle and bridge walls. It has seven towers, a super-elevated keep with four main buildings inside. The castle is surrounded by a ditch, now dry, which was once filled with waters from the nearby Adige. Castelvechio is now home to the Castelvechio Museum and the local Military Officers' Club which will be the venue of the Social Dinner.



• SOCIAL DINNER* | Friday, September 6, 2019 | h. 19:30

*Reserved only for those who have prebooked. For availability onsite please ask to the Registration Desk. Dress code: smart elegant.

VERONA

1

SANTA MARTA

Conference Venue
Via Cantarane, 24

2

RAILWAY STATION VERONA PORTA NUOVA

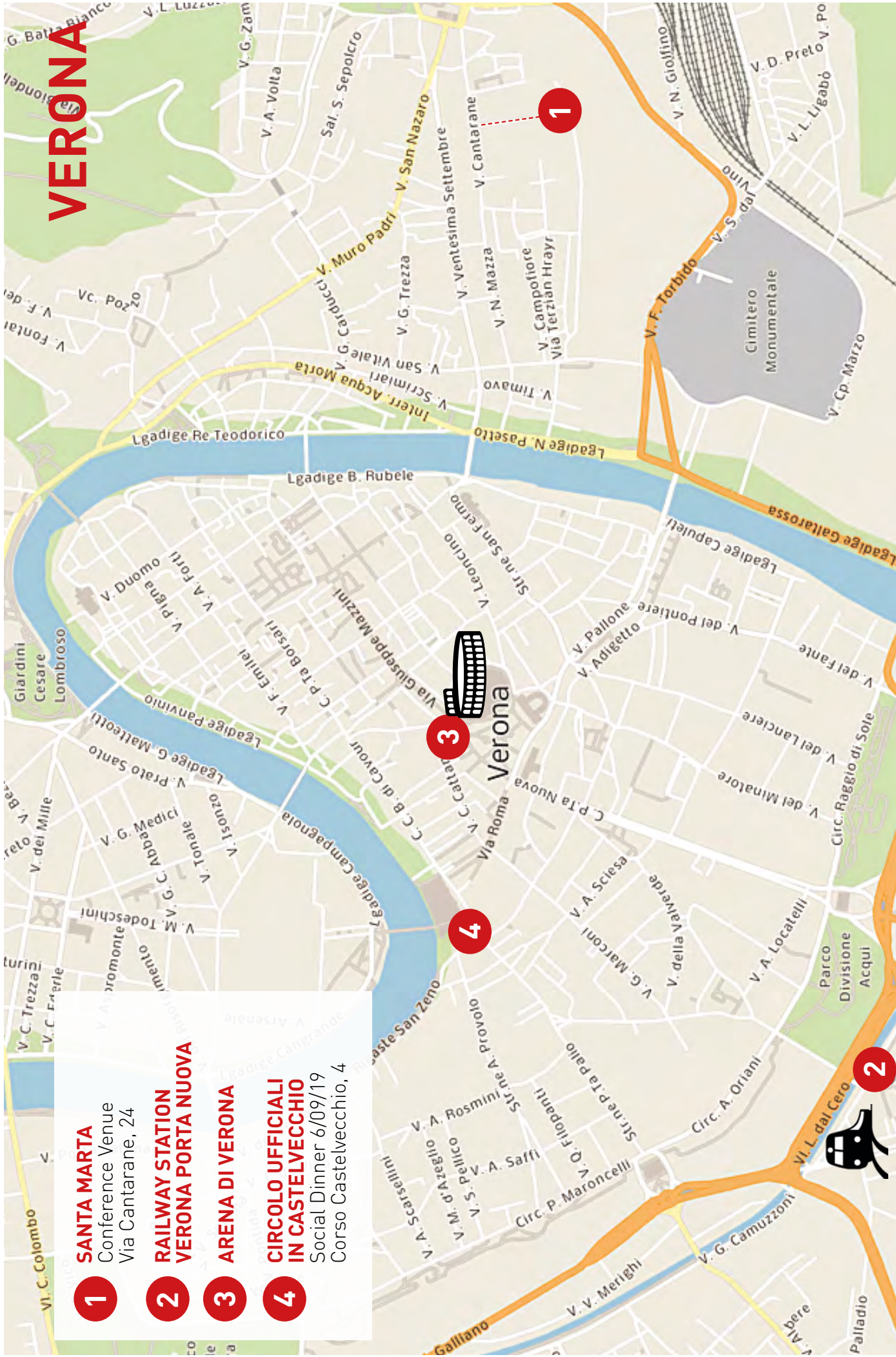
3

ARENA DI VERONA

4

CIRCOLO UFFICIALI IN CASTELVECCHIO

Social Dinner 6/09/19
Corso Castelvecchio, 4





www.eaof2019-futurementalhealth.com